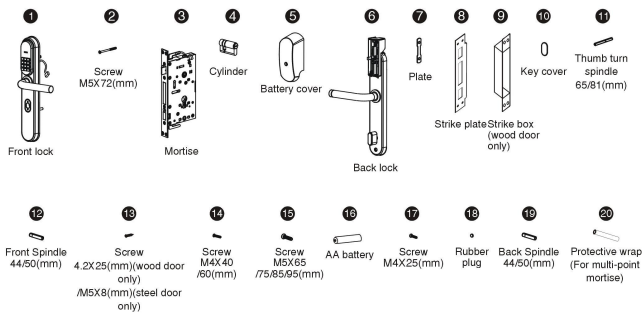
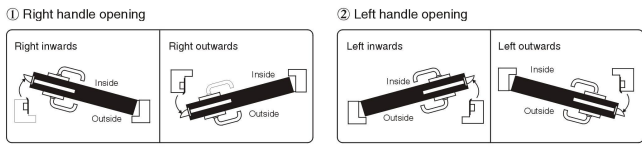


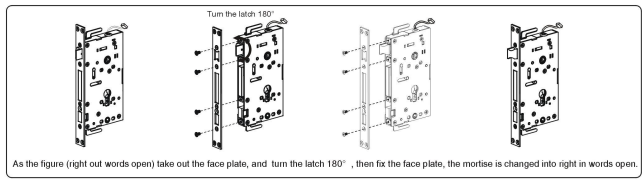
1. Accessory



2. Door opening direction



3. Convert the mortise from outside open to inside open

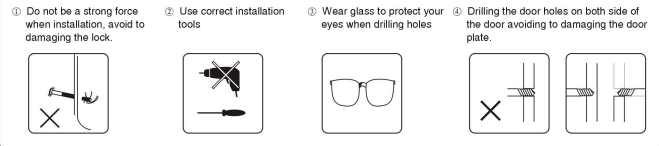


4. Accessories for sorts of door thickness

Available door thickness: 42mm-80mm. If the door is over this range, please contact us for more information. Please select the correct accessories according to your door thickness

Code and name	Specifications(mm)	QTY	door thickness ranges				
			42-50(mm)	50-60(mm)	60-72(mm)	72-80(mm)	
12 Front Spindle 44/50(mm)	44	1	✓	✓			
	50	1			✓	✓	
15 Back Spindle 44/50(mm)	44	1	✓	✓			
	50	1			✓	✓	
1 Thumb turn spindle 65/81(mm)	65	1	✓	✓			
	81	1			✓	✓	
18 Screw 2/25(mm) (wood door only)	25	8	✓	✓	✓	✓	
16 Screw M5X8(mm) (steel door only)	8	8	✓	✓	✓	✓	
13 Screw M4X40/60(mm)	40	4	✓	✓			
	60	4			✓	✓	
14 Screw M5X65/75/85/95(mm)	65	2	✓				
	75	2		✓			
	85	2			✓		
	95	2				✓	
4 Cylinder	35	1	✓	✓	✓		
	50	1				✓	
20 Protective wrap (For multi-point mortise)	70	1	(According to door thickness)	40	50	60	70

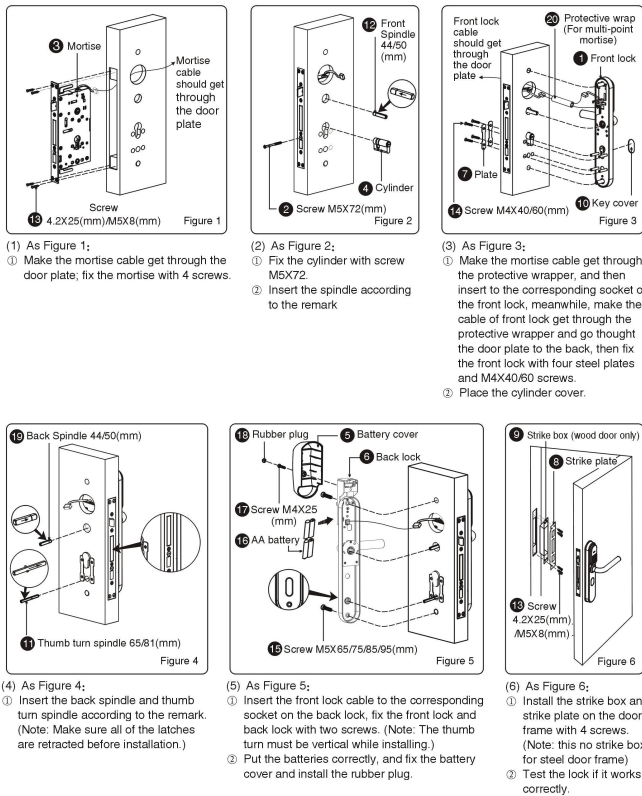
5. Caution before installation



6. Installation

Note: The appearance of lock in the picture may a little different from the real model, but same installation guide. The unmarked size tolerance of door drilling according to GB/T12471-1990-level 2.

Installation steps:



7. Check points after installation

- ① Down the handles to test if it works properly.
- ② After key registration, check the lock open.
- ③ The door should be automatically locks in 4 seconds.
- ④ Test the mechanical override, check the lock open.