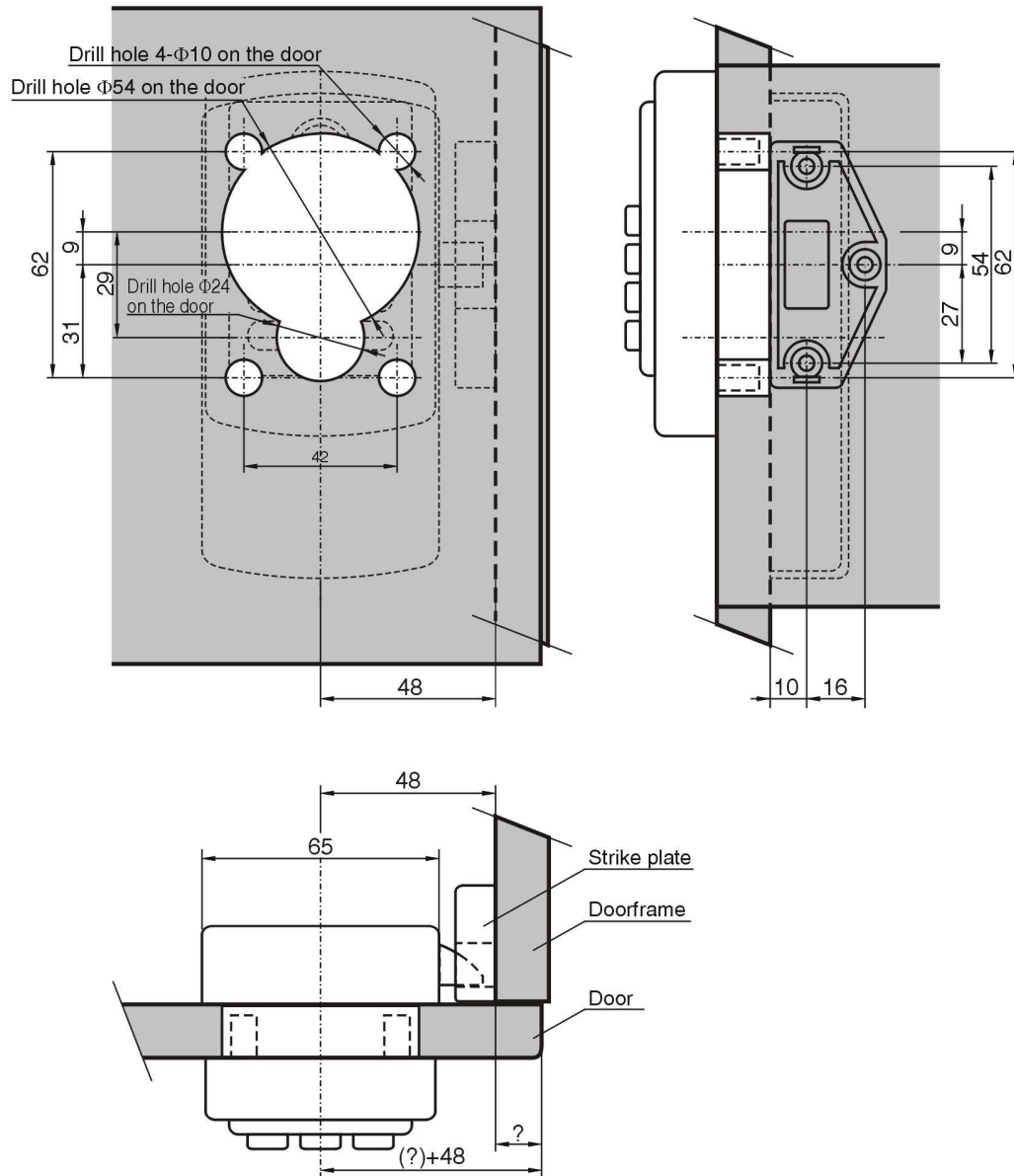


3000D,3100D,3200D-12LX(F) Drilling Hole Template and Installation Instruction

**Installation Procedure**

shown as figures which are for the left-unlocking door.

1. Drill holes according to the dimension described on the left figure before installation.
2. Connect the cable of the rear lock to the jack of the front panel through the hole of door and then fix the front panel and rear lock with 2 screw.
3. Put batteries in and cover the battery cover, then fix it with 1 screw.
4. The installation position of the strike plate should be corresponding with the latch of lock. Fix the strike plate on the doorframe with 3 pieces of screw.

