

Smart Your Life

GUANGDONG BE-TECH SECURITY SYSTEMS LIMITED

Add: No.17, Keyuan 3 Road, Ronggui, Shunde High-Tech Zone, Foshan,
Guangdong, P.R.China.

Tel: 86-757-2830 88333 Fax: 86-757-2830 8823

<http://www.be-tech.com.cn>

Email: export@be-tech.com.cn



Digital Locker Lock

User Manual

*Focus on Smart Lock
Since 1992*

CONTENTS

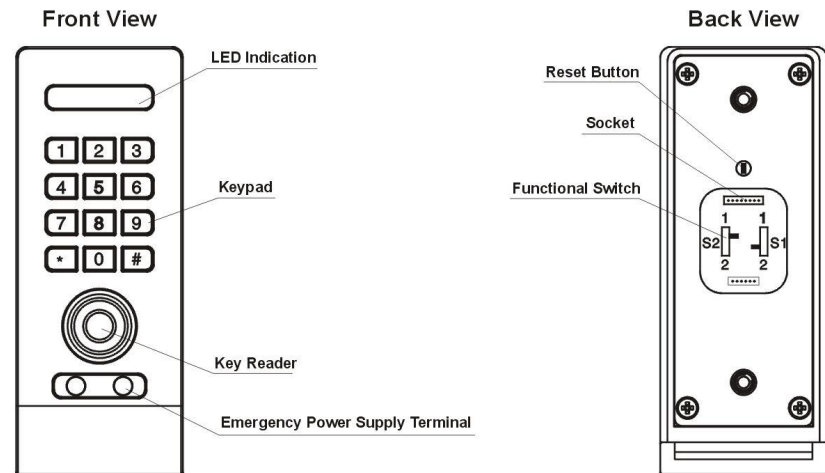
Programming Instructions	01
Optional Programming	09
Public Use Working Mode Instructions (One-Time Code)	14
Private Use Working Mode Instructions (Permanent Code)	18
Dual Authentication Working Mode Instructions (User Key + One-Time Code)	24
Trouble Shooting	30

Programming Instructions

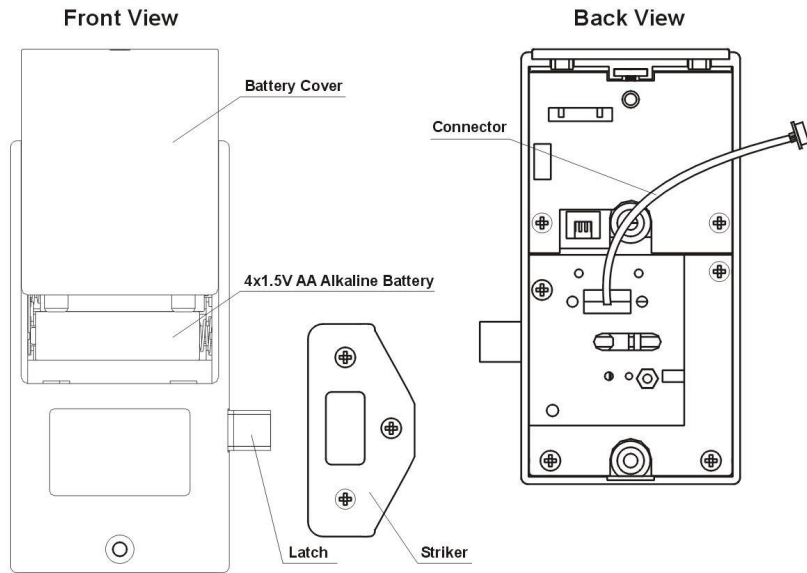
- Lock Interface Overview
- Key Guide
- Initializing Lock(s)
- Register Owner Key
- Register Master Key(s)
- Register/Change Master Code
- For Lost or Stolen Key(s)

Lock Interface Overview

Front Body



Back Body



Key Guide

Owner Key(Red)



- Provides highest level management access
- Registers Master Key(s) and master code
- Each lock accepts only (1) Owner Key

Master Key(Blue)



- Provides second level management access
- Registers Permanent Code and User Key
- Each lock accepts (5) Master Keys

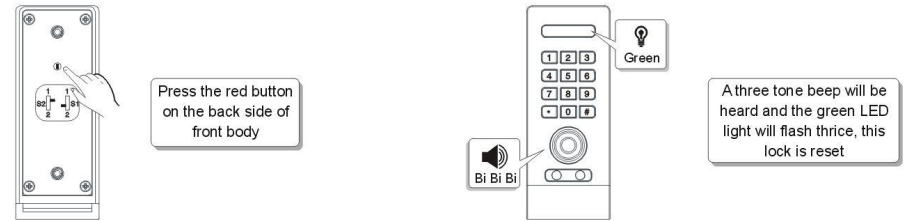
User Key(Black) (Optional)



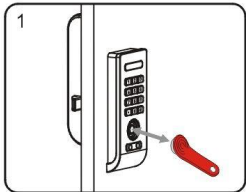
- Provides third level management access
- Each lock accepts only (1) User Keys

Initializing Lock(s)

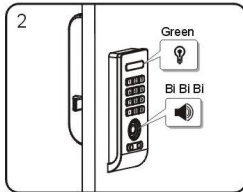
Disassemble the lock, connect back body with front body to keep power supply and press the red button to reset the lock



Register Owner Key



1 Start at locker #1. Touch the Owner key(Red) to the key reader for one full second

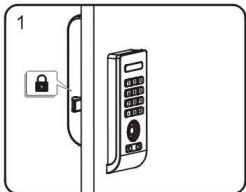


2 A three tone beep will be heard and the green LED light will flash thrice. This lock is programmed with Owner key

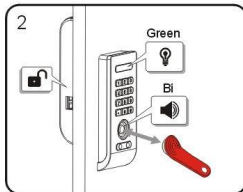


3 Test the programming by touching Owner key(Red) to the key reader of lock. If programming is successful, the lock will operate

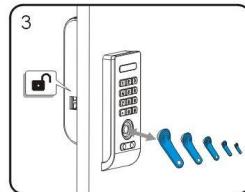
Register Master Key(s)



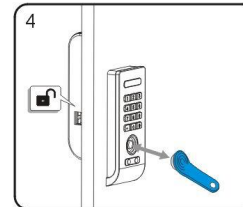
1 Go to a lock that has been programmed with existing Owner key, and the lock is under locked state



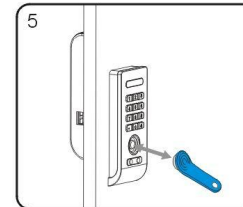
2 Touch the Owner key(Red) to the key reader of lock for one full second. The lock will unlock and the green LED light will flash



3 While LED light is flashing, touch each of the Master key(s)(Blue) to the key reader at a time, a single tone beep will be heard each time a new key is touched to the lock indicating acceptance

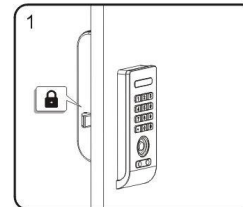


4 When you have finished touching all of Master keys(Blue), end programming by touching the Owner key(Red)

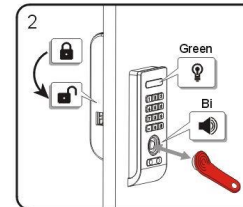


5 Test the programming by touching Master key to the key reader of lock. If programming is successful, the lock will operate

Register/Change Master Code



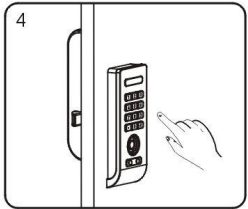
1 Go to a lock that has been programmed with existing Owner key, and the lock is under locked state



2 Touch the Owner key(Red) to the key reader of lock for one full second. The lock will unlock and the green LED light will flash



3 While LED light is flashing, Press: $\square\square\square\square\square$ (any 1~9 digit code), a two tone beep will be heard and the lock will lock to indicating acceptance

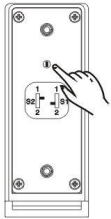


Test the programming by key in Master code of lock. If programming is successful, the lock will operate

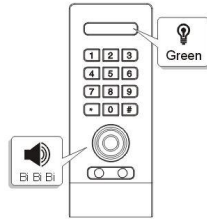
For Lost or Stolen Keys

For a Lost Owner Key

Disassemble the lock, connect back body with front body to keep power supply and press the red button to reset the lock

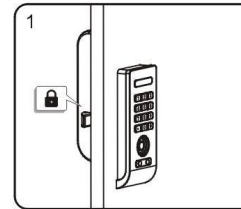


Press the red button on the back side of front body

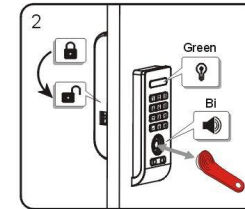


A three tone beep will be heard and the green LED light will flash thrice, this lock is reset, all of existing Owner key, Master key(s), Master code, User key, User code are deleted. (In another word, you need to reset the lock as if you lost the Owner key.

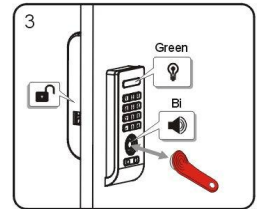
For a Lost or Delete Master Key(s) and Master Code



Under locked state



Touch the Owner key(Red) to the key reader for one full second, lock is unlocked, a single tone beep will be heard and the green LED light will flash



While the green LED light is flashing touch the Owner key(Red) to the key reader for one full second again, a three tone beep will be heard and the red LED light will flash thrice, the existing Master key and Master code are deleted

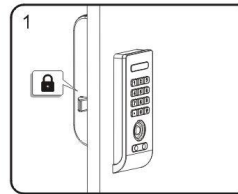
Optional Programming

- Keyboard Quiet Mode
- Alarm Quiet Mode

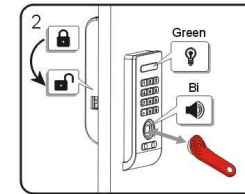
Keyboard Quiet Mode

Keyboard quiet mode is an option that can active or De-active the sound when you press the keyboard.

To Enable Keyboard Quiet Mode



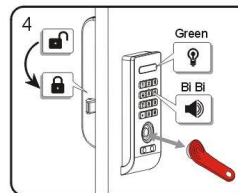
Under locked state



Touch the Owner key (Red) to the key reader of lock for one full second. The lock will unlock and the green LED light will flash

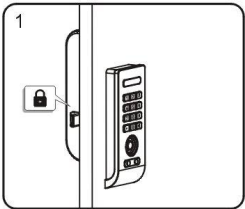


While the green LED light is flashing, press * and #, the green LED light will keep flashing

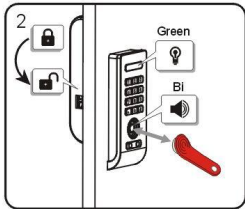


While the green LED light is flashing, touch Owner key (Red) to the key reader of lock for one full second, a two tone beep will be heard and green LED light will flash twice, lock is locked, keyboard quiet mode is active

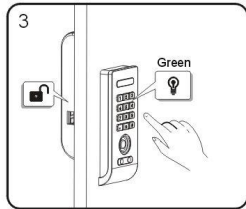
To disable Keyboard quiet mode



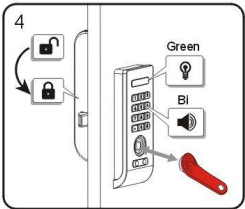
Under locked state



Touch the Owner key (Red) to the key reader of lock for one full second. The lock will unlock and the green LED light will flash



While the green LED light is flashing, press **+** and **-**, the green LED light will keep flashing

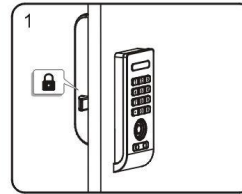


While the green LED light is flashing, Touch Owner key (Red) to the key reader of lock for one full second, a single tone beep will be heard and green LED light will flash once, lock is locked, keyboard quiet mode is De-activated

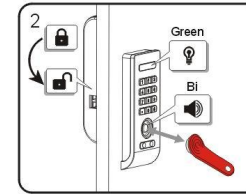
Alarm quiet mode

Alarm quiet mode is an option that can active or De-active the sound when the lock is under incorrect operating.

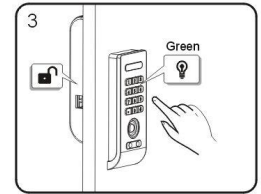
To Enable Alarm quiet mode



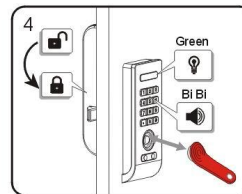
Under locked state



Touch the Owner key (Red) to the key reader of lock for one full second. The lock will unlock and the green LED light will flash

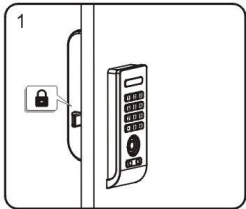


While the green LED light is flashing, press **+** and **-**, the green LED light will keep flashing

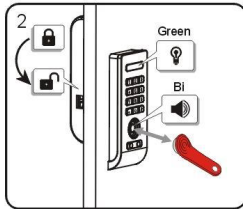


While the green LED light is flashing, Touch Owner key (Red) to the key reader of lock for one full second, a two tone beep will be heard and green LED light will flash twice, lock is locked, keyboard quiet mode is active

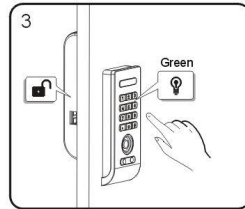
To Disable Alarm quiet mode



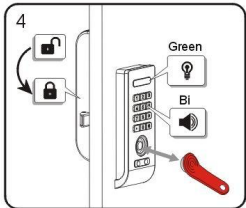
Under locked state



Touch the Owner Key (Red) to the key reader of lock for one full second. The lock will unlock and the green LED light will flash



While the green LED light is flashing, press +, the green LED light will keep flashing



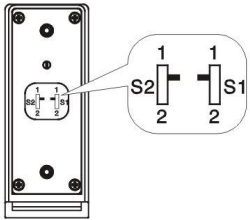
While the green LED light is flashing, Touch Owner key (Red) to the key reader of lock for one full second, a single tone beep will be heard and green LED light will flash once, lock is locked, keyboard quiet mode is De-activated

Public Use Working Mode Instructions (One-Time Code)

- Enable One-Time Code Working Mode
- One-Time Code Use Instruction
- To Operate with a One Time Code
- To Operate with Owner Key
- To Operate with Master Key
- To Operate with Master Code

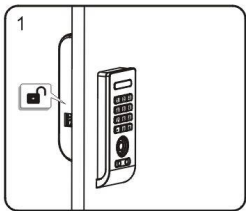
Enable One-Time Code Working Mode

Make sure S1 move to 1, S2 move to 1

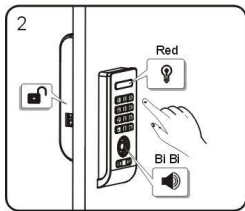


S1=1 S2=1

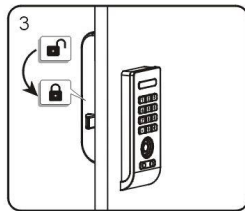
One-Time Code Use Instruction



Under unlock state



Press: [0-9] (any 1~9 digit code), a two tone beep will be heard and red LED light will flash twice



Lock is locked, One-Time code is registered

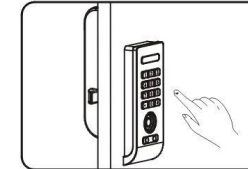
To Operate with a One-Time Code

To lock



- 1) Find an available lock
- 2) Press [0-9] (Any 1~9-digit code)

To unlock

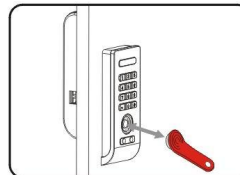


- 1) At same lock
- 2) Press [0-9] (Same code used to lock)

Note: If an incorrect code is entered four consecutive times, the lock will alarm for one full minute, or until a registered Owner key, Master key is touched to the lock.

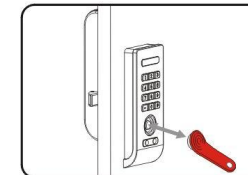
To Operate with Owner Key

To lock



Touch the Owner key(Red) to the key reader

To unlock

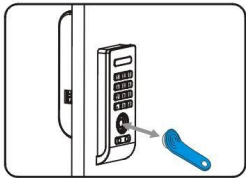


Touch the Owner key(Red) to the key reader

Note: If an incorrect iB key attempts to unlock the lock, there is no reaction from the lock.

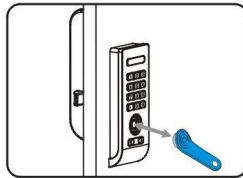
To Operate with Master Key

To lock



Touch the Master key(Blue) to the key reader

To unlock



Touch the Master key(Blue) to the key reader

Note: If an incorrect iB key attempt to unlock the lock, there is no reaction from the lock.

To Operate with Master Code

To lock



Press Master code+**[*]**

To unlock



Press Master code+**[*]**

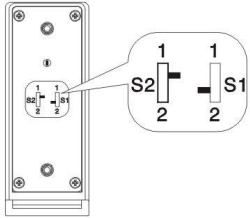
Note: If an incorrect code is entered four consecutive times, the lock will alarm for one full minute, or until a registered Owner key, Master key is touched to the lock.

Private Use Working Mode Instructions (Permanent Code)

- Enable Permanent Code Working Mode
- Permanent Code Use Instruction
- Delete Permanent Code
- To Operate with Permanent Code
- To Operate with Owner Key
- To Operate with Master Key
- To Operate with Master Code

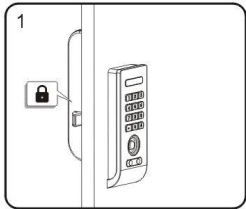
Enable Permanent Code Working Mode

Make sure S1 move to 2, S2 move to 1

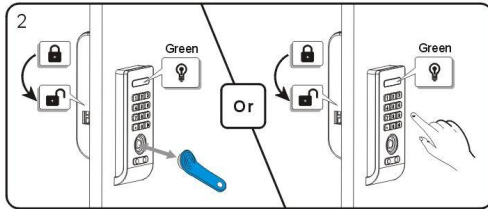


S1=2 S2=1

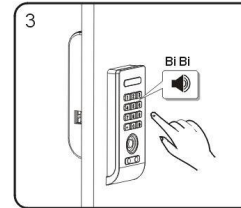
Permanent Code Use Instruction



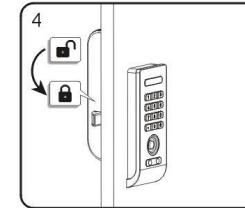
Under locked state



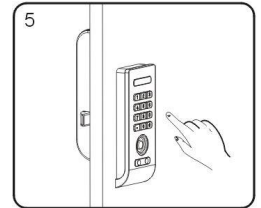
Unlock the lock with Master key(Blue) or Master code, green LED light will flash



While LED light is flashing,
Press: $\square\square\square\square\square$ (any 1~9 digit code)

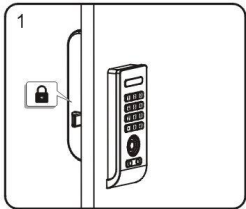


Lock is locked and a two tone beep,
will be heard, Permanent code is
registered

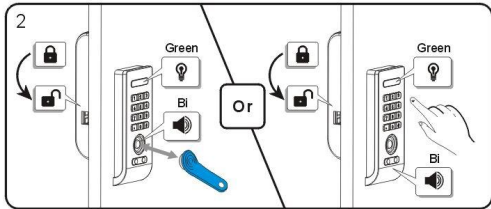


Test the programming by key in
Permanent code. If programming is
successful, the lock will operate

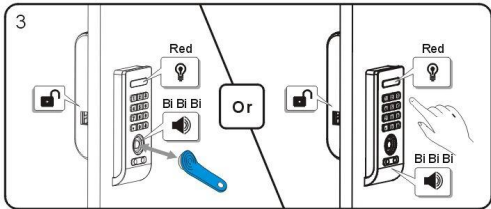
Delete Permanent Code



Under locked state



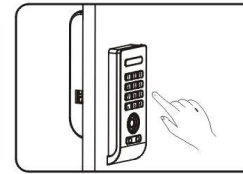
Unlock the lock with Master key (Blue) or Master code, green LED light will keep flashing



While green LED light is flashing, touch Master key (Blue) or key in Master code again, a three tone beep will be heard and red LED light will flash thrice, Permanent code is deleted

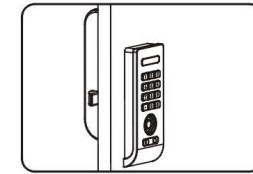
To Operate with a Permanent Code

To lock



Key in Permanent code + 

To unlock

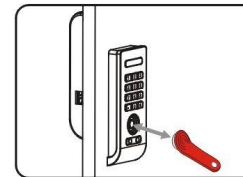


The lock will lock automatically in 4 seconds

Note: If an incorrect code is entered four consecutive times, the lock will alarm for one full minute, or until a registered Owner key, Master key is touched to the lock.

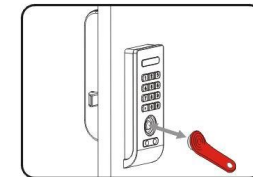
To Operate with Owner Key

To lock



Touch the Owner key (Red) to the key reader

To unlock

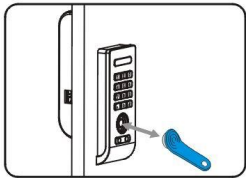


Touch the Owner key (red) to the key reader

Note: If an incorrect iB key attempts to unlock the lock, there is no reaction from the lock.

To Operate with Master Key

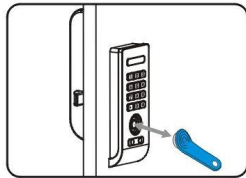
To lock



Touch the Master key(Blue) to the key reader

Note: If an incorrect iB key attempt to unlock the lock, there is no reaction from the lock.

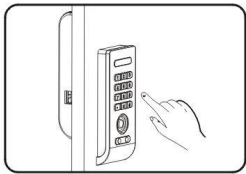
To unlock



Touch the Master key(Blue) to the key reader

To Operate with Master Code

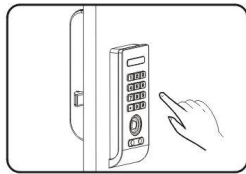
To lock



Press Master code+**[*]**

Note: If an incorrect one-time code is entered four consecutive times, the lock will alarm for one full minute, or until a registered Owner key, Master key is touched to the lock.

To unlock



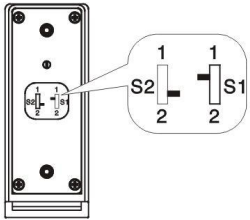
Press Master code+**[*]**

Dual Authentication Working Mode Instructions (User Key + One-Time Code)

- Enable Dual Authentication Code Working Mode
- Dual Authentication Mode Use Instruction
- To Operate with User Key + One- Time Code
- To Operate with Owner Key
- To Operate with Master Key
- To Operate with Master Code

Enable Dual Authentication Working Mode

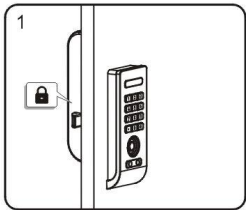
Make sure S1 move to 1, S2 move to 2



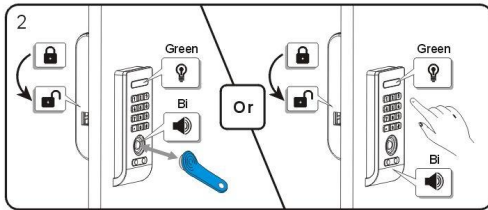
S1=1 S2=2

Dual Authentication Mode Use Instruction

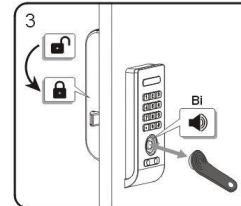
Register User Key



Under locked state

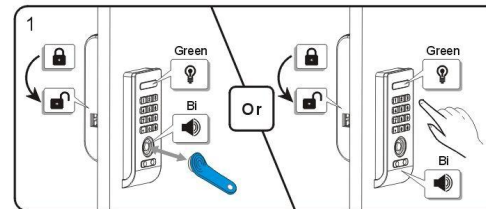


Unlock the lock with Master key or Master code, and green LED light will flash

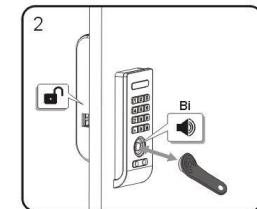


While green LED light is flashing, touch the User key (Black) to the key reader for one full second, a single tone beep will be heard and lock is locked, User key is registered.

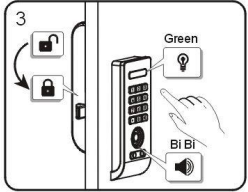
Register One-time code



At a same lock, unlock the lock with Master key (Blue) or Master code, green LED light will flash



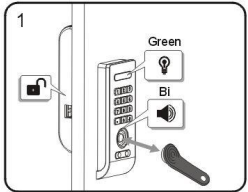
While green LED light is OFF Touch the User key (Black) to the key reader for one full second, A single tone beep will be heard and green LED light will flash



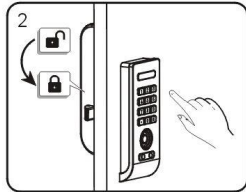
While LED light is flashing,
Press: $\square\square\square\square\square$ (any 1~9 digit code),
a two tone beep will be heard and green
LED light will flash twice, lock is locked,
One-time code is registered

To Operate with User Key + One-Time Code

To lock

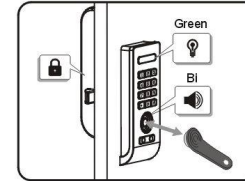


1) Find an available lock
2) Touch the User key(Black) to the
key reader for one full second, a single
tone beep will be heard and green LED
light will flash

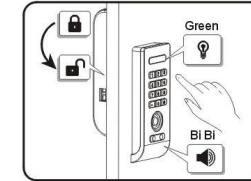


while green LED light is flashing,
Press $\square\square\square\square + \text{#}$ (Any 1~9 digit code)

To unlock



1) At same lock
2) Touch the User key(Black) to the
key reader for one full second, a single
tone beep will be heard and green LED
light will flash

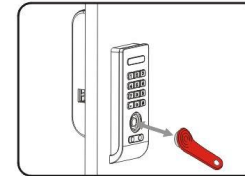


While green LED light is flashing,
Press $\square\square\square\square + \text{#}$ (same code used to lock)

Note: If an incorrect code is entered or incorrect User key is touched four consecutive times,
the lock will alarm for one full minute, or until a registered Owner key, Master key is touched to the lock.

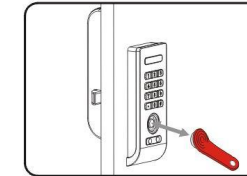
To operate with Owner Key

To lock



Touch the Owner key(Red) to the key reader

To unlock

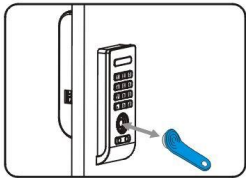


Touch the Owner key(Red) to the key reader

Note: If an incorrect iB key is touched four consecutive times,
the lock will alarm for one full minute, or until a registered Owner key, Master key is touched to the lock.

To Operate with Master Key

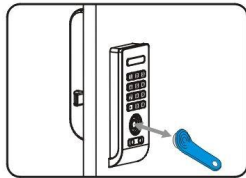
To lock



Touch the Master key(Blue) to the key reader

Note: If an incorrect iB key is touched four consecutive times, the lock will alarm for one full minute, or until a registered Owner key, Master key is touched to the lock.

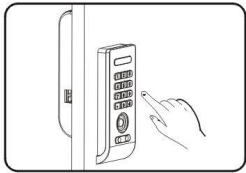
To unlock



Touch the Master key(Blue) to the key reader

To Operate with Master Code

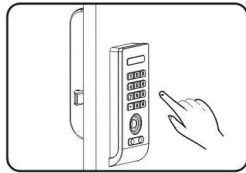
To lock



Press Master code+**7**

Note: If an incorrect code is entered four consecutive times, the lock will alarm for one full minute, or until a registered Owner key, Master key is touched to the lock.

To unlock



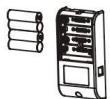
Press Master code+**7**

Trouble Shooting

- Battery & Replacement
- Anti-Thief Alarm
- Emergency Power Supply
- Occupied Indication
- Emergency Unlocking
- Code Digits
- Wrong-try Lock-out
- Scramble Code

Battery & Replacement

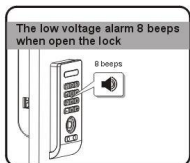
This product uses 4 1.5V alkaline AA batteries which can be used approximately one year on the condition of 10 times open/close cycles per day.



Battery life may vary due to temperature, moisture, frequency of use and the quality of the batteries.

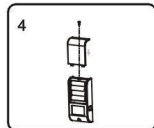
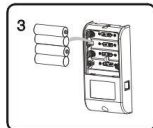
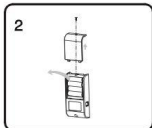
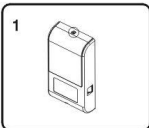
Battery replacement warning

Replace all 4 batteries when a low battery warning sound rings and green LED light under unlock the lock



Caution

- Always check '+' and '-' directions when inserting batteries.
- Use the authentic alkaline batteries. It is a user's responsibility for damage caused by using unauthentic batteries.
- Risk of explosion if battery is replaced by an incorrect type.
- Dispose of used batteries according to the instructions.



Anti-Thief Alarm

Buzzer alarms for 60 seconds when latch be pressed or picked. The alarm will be stopped by registered key(s).

If the lock is damaged or entry is forced while the door is locked, an alarm signal is triggered and red LED light flashes. (Only under normal or keyboard quiet mode)



It sounds the alarm and red LED light flashes when the lock is not closed well. (Only under normal or keyboard quiet mode)



Emergency Power Supply

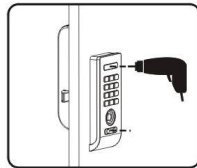
9V battery can be used to supply electricity.



External Power Supply Terminal

Emergency Unlock

In case that the lock is broken, and the lock is locked, you can't open it by any key or code, you have to drill the lock to make it open.



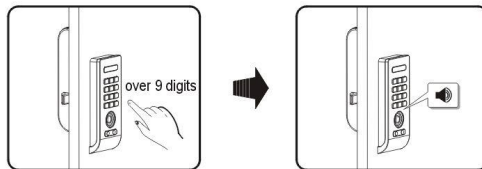
Occupied Indication

When the lock is in locked state, red LED light will flash 1 time every 2 seconds to indicate the lock already locked or Occupied.



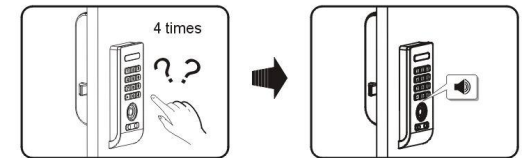
Code Digits

A maximum code of 9 digits to a minimum code of 1 digit allowed, any number combination from 0 to 9. When the code is over 9 digits, a single tone beep will be heard and the operating will be stopped.

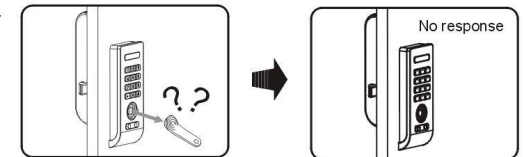


Wrong-try Lock-out

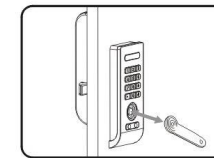
If incorrect code is attempted 4 times in the row, it will alarm for 60 seconds with the blinking LED. (Only under normal or keyboard quiet mode)



If unregistered iB key is attempted there is no response from the lock. (Under Public use working mode and Private use working mode)



To stop the alarm, please touch to registered iB key.



Scramble Code

Any meaningless number can be input prior to the right code when there is chance of exposing it to others.

Contacting Support

For additional product information including instructional videos.
Please visit us online at: www.betech-security.com

Via email: info@be-tech.com.cn

Directly at: **GUANGDONG BE-TECH SECURITY SYSTEMS LIMITED**

No.17, Keyuan 3 Road, Ronggui, Shunde High-Tech Zone, Foshan, Guangdong, P.R.China.

Phone: 86-757-2830 8833

Fax: 86-757-2830 8823