



Pony Testing International Group

## Test Report

NO.: W04053015304C

Date: Apr 13, 2012

Page 1 of 52

Applicant: GUANGDONG BE-TECH SECURITY SYSTEMS CO., LTD.  
Address: No.17, Keyuan 3 Road, Ronggui, Shunde High-Tech Zone,  
Foshan, Guangdong, P.R.China

The following sample(s) was/were submitted and identified on behalf of the client as:

Sample Name: Electronic hotel in-room safe  
Sample Model: 3001D-1HL、 3001D-3HL、 3001D-3HLC、 3001D-5HL、 3001D-5HLC

Sample Received Date: Apr 05, 2012  
Test Period: Apr 05, 2012 To Apr 13, 2012

Test Requested: In accordance with the End-of-Life Vehicles Directive 2000/53/EC /  
RoHS Directive 2011/65/EU Annex II

Test Method: 1.Review was performed for the samples disjonted from the submitted articles  
and the ralated test reports submitted by the Applicant  
2.Tests was performed for the samples indicated by the photos in the report with  
test methods reference to IEC62321 Edition 1.0 :2008: Procedures for the  
Determination of Levels of Six regulated substances in Electrotechnical  
products  
(1) Screening by XRF Spectroscopy  
(2) Wet Chemical Test Method  
a. Lead Analysis is performed by AAS  
b. Hexavalent Chromium Analysis is performed by UV  
c. PBBs and PBDEs Analysis is performed by GC-MS

Test Result: Please refer to next page(s)

Conclusion: Based on the performed tests on submitted samples, the results of Lead, Mercury,  
Cadmium, Hexavalent chromium, Polybrominated biphenyls (PBBs),  
Polybrominated diphenyl ethers (PBDEs) comply with the limits as set by RoHS  
Directive 2011/65/EU Annex II .

Approved by:

Code: g068qv32

**NOTE:Report in electronic version is only for client's preview and referee.  
For confirmative content, formal test report shall prevail.**



Pony Testing International Group

**Test Report**

NO.: W04053015304C

Date: Apr 13, 2012

Page 2 of 52

Sample List:

Sample No.	Sample Name		
W04053015304C-1	Power cord	White plastic socket shell	
W04053015304C-2		Matte white plastic plug on the socket	
W04053015304C-3		Screw 1	
W04053015304C-4		Silver black sticker	
W04053015304C-6		Binding wire core	
W04053015304C-7		Thick black casing	
W04053015304C-8		White outer wire sheath	
W04053015304C-9		Blue wire sheath	
W04053015304C-10		Coffee color wire sheath	
W04053015304C-11		Green and yellow wire sheath	
W04053015304C-12		Copper color wire core	
W04053015304C-13		Thin black casing	
W04053015304C-14		Red plastic	
W04053015304C-15		Spring	
W04053015304C-16		Copper color sheet metal	
W04053015304C-17		Red diode	Body
W04053015304C-18			Pin
W04053015304C-19		Color ring resistor	Body
W04053015304C-20			Pin
W04053015304C-21		Solder	
W04053015304C-22		Socket fixing metal plate	
W04053015304C-23	Panel Subassembly	Panel cover	Champagne color metal layer
W04053015304C-24			Base material
W04053015304C-25		Slide cover	
W04053015304C-26		Black soft strips on both sides of the panel	
W04053015304C-27		Silicone rubber keypad	
W04053015304C-28		Transparent film on black soft strips	

**NOTE: Report in electronic version is only for client's preview and referee. For confirmative content, formal test report shall prevail.**

**Test Report**

NO.: W04053015304C

Date: Apr 13, 2012

Page 3 of 52

Sample List:

Sample No.	Sample Name		
W04053015304C-29	Signs		
W04053015304C-30	Double-sided adhesive tapes on the sign		
W04053015304C-31	Nylon tying tape		
W04053015304C-32	Black rubber plug at safe opening		
W04053015304C-33	Bar code		
W04053015304C-34	QC sticker		
W04053015304C-35	Voltage frequency sticker		
W04053015304C-36	Battery spring		
W04053015304C-37	Matte white instruction manual		
W04053015304C-38	Switch components	Switch frame	
W04053015304C-39		Baffle	
W04053015304C-40		Contact spring	
W04053015304C-41		Reed contacting with the micro-switch	
W04053015304C-42		Micro Switch	White plastic lower cover
W04053015304C-43			Black plastic upper cover
W04053015304C-44			Blue plastic button
W04053015304C-45			Micro reed switch
W04053015304C-46			Leaf spring on the micro-switch
W04053015304C-47			Pin
W04053015304C-48	Black plastic shell under the box door		
W04053015304C-49	Cylindrical nut of the battery cover screw		
W04053015304C-50	Black retainer		
W04053015304C-51	Yellow pad		
W04053015304C-52	Internal wire	Grey wire sheath	
W04053015304C-53		Red wire sheath	
W04053015304C-54		Black wire sheath	
W04053015304C-55		White wire sheath	
W04053015304C-56		Wire core	
W04053015304C-57		Wire metal terminal	
W04053015304C-58		White plastic terminal cover	
W04053015304C-59		Wire harness	
W04053015304C-60		Blue plastic film on the wire harness	



**Test Report**

NO.: W04053015304C

Date: Apr 13, 2012

Page 4 of 52

Sample List:

Sample No.	Sample Name	
W04053015304C-61	Lock cylinder components	Lock cylinder retainer
W04053015304C-62		Spring bracket
W04053015304C-63		Lock cylinder spring
W04053015304C-64		Lock cylinder axis
W04053015304C-65		Lock cylinder marble
W04053015304C-66		Lock cylinder body
W04053015304C-67		Round metal gasket
W04053015304C-68		Lock cylinder lever
W04053015304C-69	Lock head components	Black metal plate
W04053015304C-70		Lock head
W04053015304C-71		Lock head lever
W04053015304C-72	Box door spring	
W04053015304C-73	Square metal gasket	
W04053015304C-74	Motor components	Motor fixing plate
W04053015304C-75		Baffle
W04053015304C-76		Gear
W04053015304C-77		Upper cover of the gear shell
W04053015304C-78		Lower cover of the gear shell
W04053015304C-79		Plastic motor shell
W04053015304C-80		Copper ring
W04053015304C-81		Golden metal ring
W04053015304C-82		Metal shell of the motor
W04053015304C-83		Soft magnet
W04053015304C-84		Metal lug
W04053015304C-85		Metal brush
W04053015304C-86		White rubber strip of the metal brush
W04053015304C-87		White plastic shim
W04053015304C-88		Red shim
W04053015304C-89		Black magnet ring
W04053015304C-90		Silvery metal shaft

**Test Report**

NO.: W04053015304C

Date: Apr 13, 2012

Page 5 of 52

Sample List:

Sample No.	Sample Name	
W04053015304C-91	Motor components	Copper color cylindrical nut
W04053015304C-92		Coil lug
W04053015304C-93		Enameled coil
W04053015304C-94		White plastic rotor sheet
W04053015304C-95		Metal rotor sheet
W04053015304C-96		Light yellow plastic piece on the shaft
W04053015304C-97	Accessories	Key ring
W04053015304C-98		Key shank
W04053015304C-99		Key head
W04053015304C-100		Black plastic
W04053015304C-101		Expansion bolt screw
W04053015304C-102		Expansion bolt metal pipe
W04053015304C-103		Expansion bolt nut
W04053015304C-104		Shim
W04053015304C-105	Transparent patch with gray printed marks	
W04053015304C-106	Battery	Transparent packaging plastic cover
W04053015304C-107		Color outer cover
W04053015304C-108		Metal shell of the battery
W04053015304C-109		Metal cover of the battery
W04053015304C-110		Black plastic washer
W04053015304C-111		Transparent plastic pad under the cover
W04053015304C-112		Isolation paper tape
W04053015304C-113		Black powder
W04053015304C-114		Gray powder
W04053015304C-115		Conductive shaft
W04053015304C-116	Circuit board	White plastic socket
W04053015304C-117		Pin of the white plastic socket
W04053015304C-118		Black plastic seat of the wire harness
W04053015304C-119		J3 beige plastic seat
W04053015304C-120		Cable seat and J3 pin
W04053015304C-121		Sticker



Pony Testing International Group

**Test Report**

NO.: W04053015304C

Date: Apr 13, 2012

Page 6 of 52

Sample List:

Sample No.	Sample Name		
W04053015304C-122	IC1	Body	
W04053015304C-123		Pin	
W04053015304C-124	IC3	Body	
W04053015304C-125		Pin	
W04053015304C-126	3-pin U1	Body	
W04053015304C-127		Pin	
W04053015304C-128	14-pin U1	Body	
W04053015304C-130	14-pin U2	Body	
W04053015304C-131		Pin	
W04053015304C-132	TX2 crystal oscillator		
W04053015304C-133	D5 diode		
W04053015304C-134	D1-D4 diode		
W04053015304C-135	PO triode		
W04053015304C-136	L1-L4 chip diode		
W04053015304C-137	N1-N4 triode		
W04053015304C-138	Circuit board	Q12 triode	
W04053015304C-139		Chip capacitor	
W04053015304C-140		Transparent plug-in diode	Body
W04053015304C-141			Pin
W04053015304C-142		Soldering	
W04053015304C-143		Chip resistor	
W04053015304C-144		PCB light board	
W04053015304C-145		INI switch	Black plastic shell
W04053015304C-146			Dome sheet
W04053015304C-147			Pin
W04053015304C-148			Metal cover
W04053015304C-149		Electrolytic capacitor	Sheath
W04053015304C-150			Aluminum shell
W04053015304C-151			Black rubber plug
W04053015304C-152			Electrode slice
W04053015304C-153			Barrier paper
W04053015304C-154	Pin		

**NOTE: Report in electronic version is only for client's preview and referee. For confirmative content, formal test report shall prevail.**





Pony Testing International Group

**Test Report**

NO.: W04053015304C

Date: Apr 13, 2012

Page 7 of 52

Sample List:

Sample No.	Sample Name		
W04053015304C-155	Circuit board	SUB joint	Metal shell
W04053015304C-156			Black plastic
W04053015304C-157			Pin
W04053015304C-159		Buzzer	Bright black plastic at the switch
W04053015304C-160			Magnet
W04053015304C-161			Coil
W04053015304C-162			White silica gel
W04053015304C-163			T iron
W04053015304C-164			Large metal sheet
W04053015304C-165			Small metal sheet
W04053015304C-166			Small PCB light pole
W04053015304C-167			Chip resistor
W04053015304C-169			Triode
W04053015304C-170		Display	Transparent plastic film
W04053015304C-171			White plastic shell
W04053015304C-172			White resin
W04053015304C-173			Pin
W04053015304C-174			Black PCB board
W04053015304C-175			Screw 2
W04053015304C-176			Screw 3
W04053015304C-177		Screw 4	
W04053015304C-178		Screw 5	
W04053015304C-179		Screw 6	
W04053015304C-180		Screw 7	
W04053015304C-181		Screw 8	
W04053015304C-182		Screw 9	
W04053015304C-183		Screw 10	

**NOTE: Report in electronic version is only for client's preview and referee. For confirmative content, formal test report shall prevail.**



Pony Testing International Group

## Test Report

NO.: W04053015304C

Date: Apr 13, 2012

Page 8 of 52

### Sample List:

Sample No.	Sample Name
W04053015304C-184	Screw 11
W04053015304C-185	Screw 12
W04053015304C-186	Screw 13
W04053015304C-187	Screw 14
W04053015304C-188	Screw 15
W04053015304C-189	Screw 16
W04053015304C-190	Screw 17
W04053015304C-191	Sealed bag
W04053015304C-192	Accessory box
W04053015304C-193	Felt
W04053015304C-194	Box door
W04053015304C-195	Box body
W04053015304C-196	ROHS sticker
W04053015304C-197	Environmental friendly sticker
W04053015304C-198	Felt with yellow glue

**NOTE: Report in electronic version is only for client's preview and referee.  
For confirmative content, formal test report shall prevail.**





Pony Testing International Group

**Test Report**

NO.: W04053015304C

Date: Apr 13, 2012

Page 9 of 52

Test Result (Unit: mg/kg)

Sample No.	EDXRF		Chemical Testing		
	Test Item	Results <sup>(1)</sup>	Test Item	Result <sup>(2)</sup> (mg/kg)	Limit
*W04053015304C-1	Pb	N.D.	Pb	\	1000
	Cd	N.D.	Cd	\	100
	Hg	N.D.	Hg	\	1000
	Cr	N.D.	Cr <sup>6+</sup>	\	1000
	Br	324	PBBs	N.D.	1000
			PBDEs	N.D.	1000
*W04053015304C-2	Pb	143	Pb	\	1000
	Cd	6.8	Cd	\	100
	Hg	N.D.	Hg	\	1000
	Cr	12.9	Cr <sup>6+</sup>	\	1000
	Br	N.D.	PBBs	\	1000
			PBDEs	\	1000
*W04053015304C-3	Pb	243	Pb	\	1000
	Cd	N.D.	Cd	\	100
	Hg	N.D.	Hg	\	1000
	Cr	423	Cr <sup>6+</sup>	\	1000
	Br	—	PBBs	\	1000
			PBDEs	\	1000
*W04053015304C-4	Pb	N.D.	Pb	\	1000
	Cd	N.D.	Cd	\	100
	Hg	N.D.	Hg	\	1000
	Cr	N.D.	Cr <sup>6+</sup>	\	1000
	Br	N.D.	PBBs	\	1000
			PBDEs	\	1000

**NOTE: Report in electronic version is only for client's preview and referee. For confirmative content, formal test report shall prevail.**



Pony Testing International Group

**Test Report**

NO.: W04053015304C

Date: Apr 13, 2012

Page 10 of 52

Test Result (Unit: mg/kg)

Sample No.	EDXRF		Chemical Testing		
	Test Item	Results <sup>(1)</sup>	Test Item	Result <sup>(2)</sup> (mg/kg)	Limit
*W04053015304C-6	Pb	76.7	Pb	\	1000
	Cd	N.D.	Cd	\	100
	Hg	N.D.	Hg	\	1000
	Cr	361	Cr <sup>6+</sup>	\	1000
	Br	—	PBBs	\	1000
			PBDEs	\	1000
*W04053015304C-7	Pb	52.2	Pb	\	1000
	Cd	N.D.	Cd	\	100
	Hg	N.D.	Hg	\	1000
	Cr	N.D.	Cr <sup>6+</sup>	\	1000
	Br	N.D.	PBBs	\	1000
			PBDEs	\	1000
*W04053015304C-8	Pb	N.D.	Pb	\	1000
	Cd	N.D.	Cd	\	100
	Hg	N.D.	Hg	\	1000
	Cr	N.D.	Cr <sup>6+</sup>	\	1000
	Br	N.D.	PBBs	\	1000
			PBDEs	\	1000
*W04053015304C-9	Pb	N.D.	Pb	\	1000
	Cd	N.D.	Cd	\	100
	Hg	N.D.	Hg	\	1000
	Cr	N.D.	Cr <sup>6+</sup>	\	1000
	Br	N.D.	PBBs	\	1000
			PBDEs	\	1000
*W04053015304C-10	Pb	N.D.	Pb	\	1000
	Cd	N.D.	Cd	\	100
	Hg	N.D.	Hg	\	1000
	Cr	N.D.	Cr <sup>6+</sup>	\	1000
	Br	N.D.	PBBs	\	1000
			PBDEs	\	1000

**NOTE: Report in electronic version is only for client's preview and referee. For confirmative content, formal test report shall prevail.**



Pony Testing International Group

**Test Report**

NO.: W04053015304C

Date: Apr 13, 2012

Page 11 of 52

Test Result (Unit: mg/kg)

Sample No.	EDXRF		Chemical Testing		
	Test Item	Results <sup>(1)</sup>	Test Item	Result <sup>(2)</sup> (mg/kg)	Limit
*W04053015304C-11	Pb	N.D.	Pb	\	1000
	Cd	N.D.	Cd	\	100
	Hg	N.D.	Hg	\	1000
	Cr	N.D.	Cr <sup>6+</sup>	\	1000
	Br	51.1	PBBs	\	1000
			PBDEs	\	1000
*W04053015304C-12	Pb	N.D.	Pb	\	1000
	Cd	N.D.	Cd	\	100
	Hg	N.D.	Hg	\	1000
	Cr	N.D.	Cr <sup>6+</sup>	\	1000
	Br	—	PBBs	\	1000
			PBDEs	\	1000
*W04053015304C-13	Pb	14.5	Pb	\	1000
	Cd	7.5	Cd	\	100
	Hg	N.D.	Hg	\	1000
	Cr	N.D.	Cr <sup>6+</sup>	\	1000
	Br	N.D.	PBBs	\	1000
			PBDEs	\	1000
*W04053015304C-14	Pb	N.D.	Pb	\	1000
	Cd	N.D.	Cd	\	100
	Hg	N.D.	Hg	\	1000
	Cr	N.D.	Cr <sup>6+</sup>	\	1000
	Br	N.D.	PBBs	\	1000
			PBDEs	\	1000
*W04053015304C-15	Pb	188	Pb	\	1000
	Cd	N.D.	Cd	\	100
	Hg	N.D.	Hg	\	1000
	Cr	485	Cr <sup>6+</sup>	\	1000
	Br	—	PBBs	\	1000
			PBDEs	\	1000

**NOTE: Report in electronic version is only for client's preview and referee. For confirmative content, formal test report shall prevail.**





Pony Testing International Group

**Test Report**

NO.: W04053015304C

Date: Apr 13, 2012

Page 12 of 52

Test Result (Unit: mg/kg)

Sample No.	EDXRF		Chemical Testing		
	Test Item	Results <sup>(1)</sup>	Test Item	Result <sup>(2)</sup> (mg/kg)	Limit
*W04053015304C-16	Pb	153	Pb	\	1000
	Cd	N.D.	Cd	\	100
	Hg	N.D.	Hg	\	1000
	Cr	N.D.	Cr <sup>6+</sup>	\	1000
	Br	—	PBBs	\	1000
			PBDEs	\	1000
*W04053015304C-17	Pb	N.D.	Pb	\	1000
	Cd	N.D.	Cd	\	100
	Hg	N.D.	Hg	\	1000
	Cr	N.D.	Cr <sup>6+</sup>	\	1000
	Br	1.85x10 <sup>3</sup>	PBBs	N.D.	1000
			PBDEs	N.D.	1000
*W04053015304C-18	Pb	252	Pb	\	1000
	Cd	N.D.	Cd	\	100
	Hg	N.D.	Hg	\	1000
	Cr	109	Cr <sup>6+</sup>	\	1000
	Br	—	PBBs	\	1000
			PBDEs	\	1000
*W04053015304C-19	Pb	N.D.	Pb	\	1000
	Cd	N.D.	Cd	\	100
	Hg	N.D.	Hg	\	1000
	Cr	N.D.	Cr <sup>6+</sup>	\	1000
	Br	N.D.	PBBs	\	1000
			PBDEs	\	1000
*W04053015304C-20	Pb	150	Pb	\	1000
	Cd	N.D.	Cd	\	100
	Hg	N.D.	Hg	\	1000
	Cr	N.D.	Cr <sup>6+</sup>	\	1000
	Br	—	PBBs	\	1000
			PBDEs	\	1000

**NOTE: Report in electronic version is only for client's preview and referee. For confirmative content, formal test report shall prevail.**



Pony Testing International Group

**Test Report**

NO.: W04053015304C

Date: Apr 13, 2012

Page 13 of 52

Test Result (Unit: mg/kg)

Sample No.	EDXRF		Chemical Testing		
	Test Item	Results <sup>(1)</sup>	Test Item	Result <sup>(2)</sup> (mg/kg)	Limit
*W04053015304C-21	Pb	69.8	Pb	\	1000
	Cd	N.D.	Cd	\	100
	Hg	N.D.	Hg	\	1000
	Cr	86.2	Cr <sup>6+</sup>	\	1000
	Br	—	PBBs	\	1000
			PBDEs	\	1000
*W04053015304C-22	Pb	N.D.	Pb	\	1000
	Cd	N.D.	Cd	\	100
	Hg	N.D.	Hg	\	1000
	Cr	740	Cr <sup>6+</sup>	N.D.	1000
	Br	—	PBBs	\	1000
			PBDEs	\	1000
W04053015304C-23	Pb	N.D.	Pb	\	1000
	Cd	N.D.	Cd	\	100
	Hg	N.D.	Hg	\	1000
	Cr	N.D.	Cr <sup>6+</sup>	\	1000
	Br	N.D.	PBBs	\	1000
			PBDEs	\	1000
W04053015304C-24	Pb	N.D.	Pb	\	1000
	Cd	N.D.	Cd	\	100
	Hg	N.D.	Hg	\	1000
	Cr	N.D.	Cr <sup>6+</sup>	\	1000
	Br	N.D.	PBBs	\	1000
			PBDEs	\	1000
W04053015304C-25	Pb	N.D.	Pb	\	1000
	Cd	N.D.	Cd	\	100
	Hg	N.D.	Hg	\	1000
	Cr	N.D.	Cr <sup>6+</sup>	\	1000
	Br	N.D.	PBBs	\	1000
			PBDEs	\	1000

**NOTE: Report in electronic version is only for client's preview and referee. For confirmative content, formal test report shall prevail.**



Pony Testing International Group

**Test Report**

NO.: W04053015304C

Date: Apr 13, 2012

Page 14 of 52

Test Result (Unit: mg/kg)

Sample No.	EDXRF		Chemical Testing		
	Test Item	Results <sup>(1)</sup>	Test Item	Result <sup>(2)</sup> (mg/kg)	Limit
W04053015304C-26	Pb	N.D.	Pb	\	1000
	Cd	N.D.	Cd	\	100
	Hg	N.D.	Hg	\	1000
	Cr	N.D.	Cr <sup>6+</sup>	\	1000
	Br	N.D.	PBBs	\	1000
			PBDEs	\	1000
W04053015304C-27	Pb	N.D.	Pb	\	1000
	Cd	N.D.	Cd	\	100
	Hg	N.D.	Hg	\	1000
	Cr	N.D.	Cr <sup>6+</sup>	\	1000
	Br	N.D.	PBBs	\	1000
			PBDEs	\	1000
W04053015304C-28	Pb	N.D.	Pb	\	1000
	Cd	N.D.	Cd	\	100
	Hg	N.D.	Hg	\	1000
	Cr	N.D.	Cr <sup>6+</sup>	\	1000
	Br	N.D.	PBBs	\	1000
			PBDEs	\	1000
*W04053015304C-29	Pb	N.D.	Pb	\	1000
	Cd	N.D.	Cd	\	100
	Hg	N.D.	Hg	\	1000
	Cr	155	Cr <sup>6+</sup>	\	1000
	Br	—	PBBs	\	1000
			PBDEs	\	1000
W04053015304C-30	Pb	N.D.	Pb	\	1000
	Cd	N.D.	Cd	\	100
	Hg	N.D.	Hg	\	1000
	Cr	N.D.	Cr <sup>6+</sup>	\	1000
	Br	N.D.	PBBs	\	1000
			PBDEs	\	1000

**NOTE: Report in electronic version is only for client's preview and referee. For confirmative content, formal test report shall prevail.**





Pony Testing International Group

**Test Report**

NO.: W04053015304C

Date: Apr 13, 2012

Page 15 of 52

Test Result (Unit: mg/kg)

Sample No.	EDXRF		Chemical Testing		
	Test Item	Results <sup>(1)</sup>	Test Item	Result <sup>(2)</sup> (mg/kg)	Limit
*W04053015304C-31	Pb	N.D.	Pb	\	1000
	Cd	N.D.	Cd	\	100
	Hg	N.D.	Hg	\	1000
	Cr	N.D.	Cr <sup>6+</sup>	\	1000
	Br	N.D.	PBBs	\	1000
			PBDEs	\	1000
*W04053015304C-32	Pb	N.D.	Pb	\	1000
	Cd	N.D.	Cd	\	100
	Hg	N.D.	Hg	\	1000
	Cr	N.D.	Cr <sup>6+</sup>	\	1000
	Br	N.D.	PBBs	\	1000
			PBDEs	\	1000
*W04053015304C-33	Pb	N.D.	Pb	\	1000
	Cd	N.D.	Cd	\	100
	Hg	N.D.	Hg	\	1000
	Cr	18.5	Cr <sup>6+</sup>	\	1000
	Br	N.D.	PBBs	\	1000
			PBDEs	\	1000
*W04053015304C-34	Pb	N.D.	Pb	\	1000
	Cd	N.D.	Cd	\	100
	Hg	N.D.	Hg	\	1000
	Cr	N.D.	Cr <sup>6+</sup>	\	1000
	Br	N.D.	PBBs	\	1000
			PBDEs	\	1000
*W04053015304C-35	Pb	17.7	Pb	\	1000
	Cd	N.D.	Cd	\	100
	Hg	N.D.	Hg	\	1000
	Cr	N.D.	Cr <sup>6+</sup>	\	1000
	Br	N.D.	PBBs	\	1000
			PBDEs	\	1000

**NOTE: Report in electronic version is only for client's preview and referee. For confirmative content, formal test report shall prevail.**



Pony Testing International Group

**Test Report**

NO.: W04053015304C

Date: Apr 13, 2012

Page 16 of 52

Test Result (Unit: mg/kg)

Sample No.	EDXRF		Chemical Testing		
	Test Item	Results <sup>(1)</sup>	Test Item	Result <sup>(2)</sup> (mg/kg)	Limit
*W04053015304C-36	Pb	204	Pb	\	1000
	Cd	N.D.	Cd	\	100
	Hg	N.D.	Hg	\	1000
	Cr	47.9	Cr <sup>6+</sup>	\	1000
	Br	—	PBBs	\	1000
			PBDEs	\	1000
*W04053015304C-37	Pb	N.D.	Pb	\	1000
	Cd	N.D.	Cd	\	100
	Hg	N.D.	Hg	\	1000
	Cr	N.D.	Cr <sup>6+</sup>	\	1000
	Br	N.D.	PBBs	\	1000
			PBDEs	\	1000
*W04053015304C-38	Pb	N.D.	Pb	\	1000
	Cd	N.D.	Cd	\	100
	Hg	N.D.	Hg	\	1000
	Cr	N.D.	Cr <sup>6+</sup>	\	1000
	Br	119	PBBs	\	1000
			PBDEs	\	1000
W04053015304C-39	Pb	N.D.	Pb	\	1000
	Cd	N.D.	Cd	\	100
	Hg	N.D.	Hg	\	1000
	Cr	N.D.	Cr <sup>6+</sup>	\	1000
	Br	55.7	PBBs	\	1000
			PBDEs	\	1000
W04053015304C-40	Pb	N.D.	Pb	\	1000
	Cd	N.D.	Cd	\	100
	Hg	N.D.	Hg	\	1000
	Cr	81.8	Cr <sup>6+</sup>	\	1000
	Br	—	PBBs	\	1000
			PBDEs	\	1000

**NOTE: Report in electronic version is only for client's preview and referee. For confirmative content, formal test report shall prevail.**



Pony Testing International Group

**Test Report**

NO.: W04053015304C

Date: Apr 13, 2012

Page 17 of 52

Test Result (Unit: mg/kg)

Sample No.	EDXRF		Chemical Testing		
	Test Item	Results <sup>(1)</sup>	Test Item	Result <sup>(2)</sup> (mg/kg)	Limit
W04053015304C-41	Pb	170	Pb	\	1000
	Cd	N.D.	Cd	\	100
	Hg	N.D.	Hg	\	1000
	Cr	7.57x10 <sup>4</sup>	Cr <sup>6+</sup>	N.D.	1000
	Br	—	PBBs	\	1000
			PBDEs	\	1000
*W04053015304C-42	Pb	56.8	Pb	\	1000
	Cd	N.D.	Cd	\	100
	Hg	N.D.	Hg	\	1000
	Cr	N.D.	Cr <sup>6+</sup>	\	1000
	Br	N.D.	PBBs	\	1000
			PBDEs	\	1000
*W04053015304C-43	Pb	N.D.	Pb	\	1000
	Cd	N.D.	Cd	\	100
	Hg	N.D.	Hg	\	1000
	Cr	N.D.	Cr <sup>6+</sup>	\	1000
	Br	N.D.	PBBs	\	1000
			PBDEs	\	1000
*W04053015304C-44	Pb	N.D.	Pb	\	1000
	Cd	N.D.	Cd	\	100
	Hg	N.D.	Hg	\	1000
	Cr	N.D.	Cr <sup>6+</sup>	\	1000
	Br	—	PBBs	\	1000
			PBDEs	\	1000
*W04053015304C-45	Pb	N.D.	Pb	\	1000
	Cd	N.D.	Cd	\	100
	Hg	N.D.	Hg	\	1000
	Cr	N.D.	Cr <sup>6+</sup>	\	1000
	Br	N.D.	PBBs	\	1000
			PBDEs	\	1000

**NOTE: Report in electronic version is only for client's preview and referee. For confirmative content, formal test report shall prevail.**





Pony Testing International Group

**Test Report**

NO.: W04053015304C

Date: Apr 13, 2012

Page 18 of 52

Test Result (Unit: mg/kg)

Sample No.	EDXRF		Chemical Testing		
	Test Item	Results <sup>(1)</sup>	Test Item	Result <sup>(2)</sup> (mg/kg)	Limit
*W04053015304C-46	Pb	129	Pb	\	1000
	Cd	N.D.	Cd	\	100
	Hg	N.D.	Hg	\	1000
	Cr	9.25x10 <sup>4</sup>	Cr <sup>6+</sup>	N.D.	1000
	Br	—	PBBs	\	1000
			PBDEs	\	1000
*W04053015304C-47	Pb	1.38x10 <sup>3</sup>	Pb	60.9	1000
	Cd	N.D.	Cd	\	100
	Hg	N.D.	Hg	\	1000
	Cr	N.D.	Cr <sup>6+</sup>	\	1000
	Br	—	PBBs	\	1000
			PBDEs	\	1000
*W04053015304C-48	Pb	N.D.	Pb	\	1000
	Cd	N.D.	Cd	\	100
	Hg	N.D.	Hg	\	1000
	Cr	N.D.	Cr <sup>6+</sup>	\	1000
	Br	N.D.	PBBs	\	1000
			PBDEs	\	1000
*#1W04053015304C-49	Pb	3.24x10 <sup>4</sup>	Pb	3.12x10 <sup>4</sup>	1000
	Cd	53.3	Cd	\	100
	Hg	N.D.	Hg	\	1000
	Cr	82.1	Cr <sup>6+</sup>	\	1000
	Br	—	PBBs	\	1000
			PBDEs	\	1000
*W04053015304C-50	Pb	311	Pb	\	1000
	Cd	N.D.	Cd	\	100
	Hg	N.D.	Hg	\	1000
	Cr	840	Cr <sup>6+</sup>	N.D.	1000
	Br	—	PBBs	\	1000
			PBDEs	\	1000

**NOTE: Report in electronic version is only for client's preview and referee. For confirmative content, formal test report shall prevail.**



Pony Testing International Group

**Test Report**

NO.: W04053015304C

Date: Apr 13, 2012

Page 19 of 52

Test Result (Unit: mg/kg)

Sample No.	EDXRF		Chemical Testing		
	Test Item	Results <sup>(1)</sup>	Test Item	Result <sup>(2)</sup> (mg/kg)	Limit
W04053015304C-51	Pb	51.2	Pb	\	1000
	Cd	N.D.	Cd	\	100
	Hg	N.D.	Hg	\	1000
	Cr	N.D.	Cr <sup>6+</sup>	\	1000
	Br	120	PBBs	\	1000
			PBDEs	\	1000
W04053015304C-52	Pb	N.D.	Pb	\	1000
	Cd	N.D.	Cd	\	100
	Hg	N.D.	Hg	\	1000
	Cr	N.D.	Cr <sup>6+</sup>	\	1000
	Br	N.D.	PBBs	\	1000
			PBDEs	\	1000
W04053015304C-53	Pb	N.D.	Pb	\	1000
	Cd	N.D.	Cd	\	100
	Hg	N.D.	Hg	\	1000
	Cr	N.D.	Cr <sup>6+</sup>	\	1000
	Br	N.D.	PBBs	\	1000
			PBDEs	\	1000
*W04053015304C-54	Pb	N.D.	Pb	\	1000
	Cd	N.D.	Cd	\	100
	Hg	N.D.	Hg	\	1000
	Cr	N.D.	Cr <sup>6+</sup>	\	1000
	Br	N.D.	PBBs	\	1000
			PBDEs	\	1000
*W04053015304C-55	Pb	103	Pb	\	1000
	Cd	N.D.	Cd	\	100
	Hg	N.D.	Hg	\	1000
	Cr	N.D.	Cr <sup>6+</sup>	\	1000
	Br	N.D.	PBBs	\	1000
			PBDEs	\	1000

**NOTE: Report in electronic version is only for client's preview and referee. For confirmative content, formal test report shall prevail.**



Pony Testing International Group

**Test Report**

NO.: W04053015304C

Date: Apr 13, 2012

Page 20 of 52

Test Result (Unit: mg/kg)

Sample No.	EDXRF		Chemical Testing		
	Test Item	Results <sup>(1)</sup>	Test Item	Result <sup>(2)</sup> (mg/kg)	Limit
*W04053015304C-56	Pb	174	Pb	\	1000
	Cd	N.D.	Cd	\	100
	Hg	N.D.	Hg	\	1000
	Cr	51.1	Cr <sup>6+</sup>	\	1000
	Br	—	PBBs	\	1000
			PBDEs	\	1000
* <sup>#1</sup> W04053015304C-57	Pb	980	Pb	4.07×10 <sup>3</sup>	1000
	Cd	N.D.	Cd	\	100
	Hg	N.D.	Hg	\	1000
	Cr	N.D.	Cr <sup>6+</sup>	\	1000
	Br	—	PBBs	\	1000
			PBDEs	\	1000
*W04053015304C-58	Pb	N.D.	Pb	\	1000
	Cd	N.D.	Cd	\	100
	Hg	N.D.	Hg	\	1000
	Cr	N.D.	Cr <sup>6+</sup>	\	1000
	Br	N.D.	PBBs	\	1000
			PBDEs	\	1000
*W04053015304C-59	Pb	N.D.	Pb	\	1000
	Cd	29.6	Cd	\	100
	Hg	N.D.	Hg	\	1000
	Cr	N.D.	Cr <sup>6+</sup>	\	1000
	Br	2.60×10 <sup>4</sup>	PBBs	N.D.	1000
			PBDEs	N.D.	1000
*W04053015304C-60	Pb	N.D.	Pb	\	1000
	Cd	N.D.	Cd	\	100
	Hg	N.D.	Hg	\	1000
	Cr	N.D.	Cr <sup>6+</sup>	\	1000
	Br	N.D.	PBBs	\	1000
			PBDEs	\	1000

**NOTE: Report in electronic version is only for client's preview and referee. For confirmative content, formal test report shall prevail.**





Pony Testing International Group

**Test Report**

NO.: W04053015304C

Date: Apr 13, 2012

Page 21 of 52

Test Result (Unit: mg/kg)

Sample No.	EDXRF		Chemical Testing		
	Test Item	Results <sup>(1)</sup>	Test Item	Result <sup>(2)</sup> (mg/kg)	Limit
*W04053015304C-61	Pb	525	Pb	\	1000
	Cd	N.D.	Cd	\	100
	Hg	N.D.	Hg	\	1000
	Cr	315	Cr <sup>6+</sup>	\	1000
	Br	—	PBBs	\	1000
			PBDEs	\	1000
*W04053015304C-62	Pb	481	Pb	\	1000
	Cd	N.D.	Cd	\	100
	Hg	N.D.	Hg	\	1000
	Cr	847	Cr <sup>6+</sup>	N.D.	1000
	Br	—	PBBs	\	1000
			PBDEs	\	1000
*W04053015304C-63	Pb	270	Pb	\	1000
	Cd	N.D.	Cd	\	100
	Hg	N.D.	Hg	\	1000
	Cr	6.35x10 <sup>4</sup>	Cr <sup>6+</sup>	N.D.	1000
	Br	—	PBBs	\	1000
			PBDEs	\	1000
#1W04053015304C-64	Pb	1.51x10 <sup>4</sup>	Pb	2.53x10 <sup>4</sup>	1000
	Cd	N.D.	Cd	\	100
	Hg	N.D.	Hg	\	1000
	Cr	N.D.	Cr <sup>6+</sup>	\	1000
	Br	—	PBBs	\	1000
			PBDEs	\	1000
*#1W04053015304C-65	Pb	1.98x10 <sup>4</sup>	Pb	2.63x10 <sup>4</sup>	1000
	Cd	29.1	Cd	\	100
	Hg	N.D.	Hg	\	1000
	Cr	91.3	Cr <sup>6+</sup>	\	1000
	Br	—	PBBs	\	1000
			PBDEs	\	1000

**NOTE: Report in electronic version is only for client's preview and referee. For confirmative content, formal test report shall prevail.**



Pony Testing International Group

**Test Report**

NO.: W04053015304C

Date: Apr 13, 2012

Page 22 of 52

Test Result (Unit: mg/kg)

Sample No.	EDXRF		Chemical Testing		
	Test Item	Results <sup>(1)</sup>	Test Item	Result <sup>(2)</sup> (mg/kg)	Limit
*W04053015304C-66	Pb	1.51×10 <sup>4</sup>	Pb	1.86×10 <sup>4</sup>	1000
	Cd	N.D.	Cd	\	100
	Hg	N.D.	Hg	\	1000
	Cr	N.D.	Cr <sup>6+</sup>	\	1000
	Br	—	PBBs	\	1000
			PBDEs	\	1000
*W04053015304C-67	Pb	211	Pb	\	1000
	Cd	N.D.	Cd	\	100
	Hg	N.D.	Hg	\	1000
	Cr	1.87×10 <sup>3</sup>	Cr <sup>6+</sup>	N.D.	1000
	Br	—	PBBs	\	1000
			PBDEs	\	1000
*W04053015304C-68	Pb	134	Pb	\	1000
	Cd	N.D.	Cd	\	100
	Hg	N.D.	Hg	\	1000
	Cr	1.38×10 <sup>3</sup>	Cr <sup>6+</sup>	N.D.	1000
	Br	—	PBBs	\	1000
			PBDEs	\	1000
*W04053015304C-69	Pb	81.1	Pb	\	1000
	Cd	N.D.	Cd	\	100
	Hg	N.D.	Hg	\	1000
	Cr	482	Cr <sup>6+</sup>	\	1000
	Br	—	PBBs	\	1000
			PBDEs	\	1000
*W04053015304C-70	Pb	96.4	Pb	\	1000
	Cd	N.D.	Cd	\	100
	Hg	N.D.	Hg	\	1000
	Cr	N.D.	Cr <sup>6+</sup>	\	1000
	Br	—	PBBs	\	1000
			PBDEs	\	1000

**NOTE: Report in electronic version is only for client's preview and referee. For confirmative content, formal test report shall prevail.**



Pony Testing International Group

**Test Report**

NO.: W04053015304C

Date: Apr 13, 2012

Page 23 of 52

Test Result (Unit: mg/kg)

Sample No.	EDXRF		Chemical Testing		
	Test Item	Results <sup>(1)</sup>	Test Item	Result <sup>(2)</sup> (mg/kg)	Limit
*W04053015304C-71	Pb	134	Pb	\	1000
	Cd	N.D.	Cd	\	100
	Hg	N.D.	Hg	\	1000
	Cr	1.87×10 <sup>3</sup>	Cr <sup>6+</sup>	N.D.	1000
	Br	—	PBBs	\	1000
			PBDEs	\	1000
*W04053015304C-72	Pb	87.9	Pb	\	1000
	Cd	N.D.	Cd	\	100
	Hg	N.D.	Hg	\	1000
	Cr	1.16×10 <sup>5</sup>	Cr <sup>6+</sup>	N.D.	1000
	Br	—	PBBs	\	1000
			PBDEs	\	1000
W04053015304C-73	Pb	N.D.	Pb	\	1000
	Cd	N.D.	Cd	\	100
	Hg	N.D.	Hg	\	1000
	Cr	N.D.	Cr <sup>6+</sup>	\	1000
	Br	—	PBBs	\	1000
			PBDEs	\	1000
*W04053015304C-74	Pb	N.D.	Pb	\	1000
	Cd	N.D.	Cd	\	100
	Hg	N.D.	Hg	\	1000
	Cr	641	Cr <sup>6+</sup>	N.D.	1000
	Br	—	PBBs	\	1000
			PBDEs	\	1000
*W04053015304C-75	Pb	N.D.	Pb	\	1000
	Cd	N.D.	Cd	\	100
	Hg	N.D.	Hg	\	1000
	Cr	496	Cr <sup>6+</sup>	\	1000
	Br	—	PBBs	\	1000
			PBDEs	\	1000

**NOTE: Report in electronic version is only for client's preview and referee. For confirmative content, formal test report shall prevail.**





Pony Testing International Group

**Test Report**

NO.: W04053015304C

Date: Apr 13, 2012

Page 24 of 52

Test Result (Unit: mg/kg)

Sample No.	EDXRF		Chemical Testing		
	Test Item	Results <sup>(1)</sup>	Test Item	Result <sup>(2)</sup> (mg/kg)	Limit
*W04053015304C-76	Pb	142	Pb	\	1000
	Cd	12.0	Cd	\	100
	Hg	N.D.	Hg	\	1000
	Cr	117	Cr <sup>6+</sup>	\	1000
	Br	—	PBBs	\	1000
			PBDEs	\	1000
*W04053015304C-77	Pb	N.D.	Pb	\	1000
	Cd	N.D.	Cd	\	100
	Hg	N.D.	Hg	\	1000
	Cr	428	Cr <sup>6+</sup>	\	1000
	Br	—	PBBs	\	1000
			PBDEs	\	1000
*W04053015304C-78	Pb	253	Pb	\	1000
	Cd	N.D.	Cd	\	100
	Hg	N.D.	Hg	\	1000
	Cr	N.D.	Cr <sup>6+</sup>	\	1000
	Br	—	PBBs	\	1000
			PBDEs	\	1000
*W04053015304C-79	Pb	19.9	Pb	\	1000
	Cd	N.D.	Cd	\	100
	Hg	N.D.	Hg	\	1000
	Cr	N.D.	Cr <sup>6+</sup>	\	1000
	Br	N.D.	PBBs	\	1000
			PBDEs	\	1000
*W04053015304C-80	Pb	N.D.	Pb	\	1000
	Cd	N.D.	Cd	\	100
	Hg	N.D.	Hg	\	1000
	Cr	90.0	Cr <sup>6+</sup>	\	1000
	Br	—	PBBs	\	1000
			PBDEs	\	1000

**NOTE: Report in electronic version is only for client's preview and referee. For confirmative content, formal test report shall prevail.**



Pony Testing International Group

**Test Report**

NO.: W04053015304C

Date: Apr 13, 2012

Page 25 of 52

Test Result (Unit: mg/kg)

Sample No.	EDXRF		Chemical Testing		
	Test Item	Results <sup>(1)</sup>	Test Item	Result <sup>(2)</sup> (mg/kg)	Limit
*#1W04053015304C-81	Pb	3.08×10 <sup>4</sup>	Pb	2.68×10 <sup>4</sup>	1000
	Cd	30.8	Cd	\	100
	Hg	N.D.	Hg	\	1000
	Cr	161	Cr <sup>6+</sup>	\	1000
	Br	—	PBBs	\	1000
			PBDEs	\	1000
*W04053015304C-82	Pb	N.D.	Pb	\	1000
	Cd	N.D.	Cd	\	100
	Hg	N.D.	Hg	\	1000
	Cr	N.D.	Cr <sup>6+</sup>	\	1000
	Br	—	PBBs	\	1000
			PBDEs	\	1000
*W04053015304C-83	Pb	N.D.	Pb	\	1000
	Cd	N.D.	Cd	\	100
	Hg	N.D.	Hg	\	1000
	Cr	73.7	Cr <sup>6+</sup>	\	1000
	Br	—	PBBs	\	1000
			PBDEs	\	1000
*W04053015304C-84	Pb	9.27×10 <sup>3</sup>	Pb	28.9	1000
	Cd	N.D.	Cd	\	100
	Hg	N.D.	Hg	\	1000
	Cr	178	Cr <sup>6+</sup>	\	1000
	Br	—	PBBs	\	1000
			PBDEs	\	1000
*W04053015304C-85	Pb	N.D.	Pb	\	1000
	Cd	N.D.	Cd	\	100
	Hg	N.D.	Hg	\	1000
	Cr	N.D.	Cr <sup>6+</sup>	\	1000
	Br	—	PBBs	\	1000
			PBDEs	\	1000

**NOTE: Report in electronic version is only for client's preview and referee. For confirmative content, formal test report shall prevail.**



Pony Testing International Group

**Test Report**

NO.: W04053015304C

Date: Apr 13, 2012

Page 26 of 52

Test Result (Unit: mg/kg)

Sample No.	EDXRF		Chemical Testing		
	Test Item	Results <sup>(1)</sup>	Test Item	Result <sup>(2)</sup> (mg/kg)	Limit
*W04053015304C-86	Pb	N.D.	Pb	\	1000
	Cd	N.D.	Cd	\	100
	Hg	N.D.	Hg	\	1000
	Cr	N.D.	Cr <sup>6+</sup>	\	1000
	Br	N.D.	PBBs	\	1000
			PBDEs	\	1000
*W04053015304C-87	Pb	N.D.	Pb	\	1000
	Cd	N.D.	Cd	\	100
	Hg	N.D.	Hg	\	1000
	Cr	N.D.	Cr <sup>6+</sup>	\	1000
	Br	N.D.	PBBs	\	1000
			PBDEs	\	1000
*W04053015304C-88	Pb	31.5	Pb	\	1000
	Cd	N.D.	Cd	\	100
	Hg	N.D.	Hg	\	1000
	Cr	N.D.	Cr <sup>6+</sup>	\	1000
	Br	N.D.	PBBs	\	1000
			PBDEs	\	1000
*W04053015304C-89	Pb	N.D.	Pb	\	1000
	Cd	N.D.	Cd	\	100
	Hg	N.D.	Hg	\	1000
	Cr	4.27×10 <sup>3</sup>	Cr <sup>6+</sup>	N.D.	1000
	Br	—	PBBs	\	1000
			PBDEs	\	1000
*W04053015304C-90	Pb	142	Pb	\	1000
	Cd	N.D.	Cd	\	100
	Hg	N.D.	Hg	\	1000
	Cr	5.41×10 <sup>4</sup>	Cr <sup>6+</sup>	N.D.	1000
	Br	—	PBBs	\	1000
			PBDEs	\	1000

**NOTE: Report in electronic version is only for client's preview and referee. For confirmative content, formal test report shall prevail.**





Pony Testing International Group

**Test Report**

NO.: W04053015304C

Date: Apr 13, 2012

Page 27 of 52

Test Result (Unit: mg/kg)

Sample No.	EDXRF		Chemical Testing		
	Test Item	Results <sup>(1)</sup>	Test Item	Result <sup>(2)</sup> (mg/kg)	Limit
*#1W04053015304C-91	Pb	3.05×10 <sup>4</sup>	Pb	3.28×10 <sup>4</sup>	1000
	Cd	N.D.	Cd	\	100
	Hg	N.D.	Hg	\	1000
	Cr	N.D.	Cr <sup>6+</sup>	\	1000
	Br	—	PBBs	\	1000
			PBDEs	\	1000
*W04053015304C-92	Pb	N.D.	Pb	\	1000
	Cd	N.D.	Cd	\	100
	Hg	N.D.	Hg	\	1000
	Cr	N.D.	Cr <sup>6+</sup>	\	1000
	Br	—	PBBs	\	1000
			PBDEs	\	1000
*W04053015304C-93	Pb	N.D.	Pb	\	1000
	Cd	N.D.	Cd	\	100
	Hg	N.D.	Hg	\	1000
	Cr	N.D.	Cr <sup>6+</sup>	\	1000
	Br	—	PBBs	\	1000
			PBDEs	\	1000
*W04053015304C-94	Pb	N.D.	Pb	\	1000
	Cd	N.D.	Cd	\	100
	Hg	N.D.	Hg	\	1000
	Cr	N.D.	Cr <sup>6+</sup>	\	1000
	Br	N.D.	PBBs	\	1000
			PBDEs	\	1000
*W04053015304C-95	Pb	N.D.	Pb	\	1000
	Cd	N.D.	Cd	\	100
	Hg	N.D.	Hg	\	1000
	Cr	246	Cr <sup>6+</sup>	\	1000
	Br	—	PBBs	\	1000
			PBDEs	\	1000

**NOTE: Report in electronic version is only for client's preview and referee. For confirmative content, formal test report shall prevail.**



Pony Testing International Group

**Test Report**

NO.: W04053015304C

Date: Apr 13, 2012

Page 28 of 52

Test Result (Unit: mg/kg)

Sample No.	EDXRF		Chemical Testing		
	Test Item	Results <sup>(1)</sup>	Test Item	Result <sup>(2)</sup> (mg/kg)	Limit
*W04053015304C-96	Pb	37.6	Pb	\	1000
	Cd	N.D.	Cd	\	100
	Hg	N.D.	Hg	\	1000
	Cr	N.D.	Cr <sup>6+</sup>	\	1000
	Br	57.9	PBBs	\	1000
			PBDEs	\	1000
*W04053015304C-97	Pb	1.04x10 <sup>3</sup>	Pb	N.D.	1000
	Cd	N.D.	Cd	\	100
	Hg	N.D.	Hg	\	1000
	Cr	172	Cr <sup>6+</sup>	\	1000
	Br	—	PBBs	\	1000
			PBDEs	\	1000
*W04053015304C-98	Pb	24.4	Pb	\	1000
	Cd	N.D.	Cd	\	100
	Hg	N.D.	Hg	\	1000
	Cr	104	Cr <sup>6+</sup>	\	1000
	Br	109	PBBs	\	1000
			PBDEs	\	1000
*#1W04053015304C-99	Pb	1.19x10 <sup>4</sup>	Pb	2.40x10 <sup>4</sup>	1000
	Cd	64.6	Cd	\	100
	Hg	N.D.	Hg	\	1000
	Cr	97.0	Cr <sup>6+</sup>	\	1000
	Br	—	PBBs	\	1000
			PBDEs	\	1000
*W04053015304C-100	Pb	N.D.	Pb	\	1000
	Cd	N.D.	Cd	\	100
	Hg	N.D.	Hg	\	1000
	Cr	N.D.	Cr <sup>6+</sup>	\	1000
	Br	N.D.	PBBs	\	1000
			PBDEs	\	1000

**NOTE: Report in electronic version is only for client's preview and referee. For confirmative content, formal test report shall prevail.**



Pony Testing International Group

**Test Report**

NO.: W04053015304C

Date: Apr 13, 2012

Page 29 of 52

Test Result (Unit: mg/kg)

Sample No.	EDXRF		Chemical Testing		
	Test Item	Results <sup>(1)</sup>	Test Item	Result <sup>(2)</sup> (mg/kg)	Limit
*W04053015304C-101	Pb	103	Pb	\	1000
	Cd	N.D.	Cd	\	100
	Hg	N.D.	Hg	\	1000
	Cr	698	Cr <sup>6+</sup>	N.D.	1000
	Br	—	PBBs	\	1000
			PBDEs	\	1000
*W04053015304C-102	Pb	73.6	Pb	\	1000
	Cd	N.D.	Cd	\	100
	Hg	N.D.	Hg	\	1000
	Cr	2.04×10 <sup>3</sup>	Cr <sup>6+</sup>	N.D.	1000
	Br	—	PBBs	\	1000
			PBDEs	\	1000
*W04053015304C-103	Pb	53.0	Pb	\	1000
	Cd	N.D.	Cd	\	100
	Hg	N.D.	Hg	\	1000
	Cr	1.07×10 <sup>3</sup>	Cr <sup>6+</sup>	N.D.	1000
	Br	—	PBBs	\	1000
			PBDEs	\	1000
*W04053015304C-104	Pb	70.3	Pb	\	1000
	Cd	N.D.	Cd	\	100
	Hg	N.D.	Hg	\	1000
	Cr	1.52×10 <sup>3</sup>	Cr <sup>6+</sup>	N.D.	1000
	Br	—	PBBs	\	1000
			PBDEs	\	1000
W04053015304C-105	Pb	N.D.	Pb	\	1000
	Cd	N.D.	Cd	\	100
	Hg	N.D.	Hg	\	1000
	Cr	N.D.	Cr <sup>6+</sup>	\	1000
	Br	N.D.	PBBs	\	1000
			PBDEs	\	1000

**NOTE: Report in electronic version is only for client's preview and referee. For confirmative content, formal test report shall prevail.**





Pony Testing International Group

**Test Report**

NO.: W04053015304C

Date: Apr 13, 2012

Page 30 of 52

Test Result (Unit: mg/kg)

Sample No.	EDXRF		Chemical Testing		
	Test Item	Results <sup>(1)</sup>	Test Item	Result <sup>(2)</sup> (mg/kg)	Limit
W04053015304C-106	Pb	N.D.	Pb	\	1000
	Cd	N.D.	Cd	\	100
	Hg	N.D.	Hg	\	1000
	Cr	N.D.	Cr <sup>6+</sup>	\	1000
	Br	N.D.	PBBs	\	1000
			PBDEs	\	1000
W04053015304C-107	Pb	N.D.	Pb	\	1000
	Cd	N.D.	Cd	\	100
	Hg	N.D.	Hg	\	1000
	Cr	N.D.	Cr <sup>6+</sup>	\	1000
	Br	N.D.	PBBs	\	1000
			PBDEs	\	1000
W04053015304C-108	Pb	90.6	Pb	\	1000
	Cd	N.D.	Cd	\	100
	Hg	N.D.	Hg	\	1000
	Cr	281	Cr <sup>6+</sup>	\	1000
	Br	—	PBBs	\	1000
			PBDEs	\	1000
W04053015304C-109	Pb	N.D.	Pb	\	1000
	Cd	N.D.	Cd	\	100
	Hg	N.D.	Hg	\	1000
	Cr	N.D.	Cr <sup>6+</sup>	\	1000
	Br	—	PBBs	\	1000
			PBDEs	\	1000
W04053015304C-110	Pb	N.D.	Pb	\	1000
	Cd	N.D.	Cd	\	100
	Hg	N.D.	Hg	\	1000
	Cr	N.D.	Cr <sup>6+</sup>	\	1000
	Br	N.D.	PBBs	\	1000
			PBDEs	\	1000

**NOTE: Report in electronic version is only for client's preview and referee. For confirmative content, formal test report shall prevail.**



Pony Testing International Group

**Test Report**

NO.: W04053015304C

Date: Apr 13, 2012

Page 31 of 52

Test Result (Unit: mg/kg)

Sample No.	EDXRF		Chemical Testing		
	Test Item	Results <sup>(1)</sup>	Test Item	Result <sup>(2)</sup> (mg/kg)	Limit
W04053015304C-111	Pb	N.D.	Pb	\	1000
	Cd	N.D.	Cd	\	100
	Hg	N.D.	Hg	\	1000
	Cr	N.D.	Cr <sup>6+</sup>	\	1000
	Br	N.D.	PBBs	\	1000
			PBDEs	\	1000
W04053015304C-112	Pb	N.D.	Pb	\	1000
	Cd	N.D.	Cd	\	100
	Hg	N.D.	Hg	\	1000
	Cr	51.2	Cr <sup>6+</sup>	\	1000
	Br	N.D.	PBBs	\	1000
			PBDEs	\	1000
W04053015304C-113	Pb	N.D.	Pb	\	1000
	Cd	N.D.	Cd	\	100
	Hg	N.D.	Hg	\	1000
	Cr	68.0	Cr <sup>6+</sup>	\	1000
	Br	108	PBBs	\	1000
			PBDEs	\	1000
W04053015304C-114	Pb	N.D.	Pb	\	1000
	Cd	N.D.	Cd	\	100
	Hg	N.D.	Hg	\	1000
	Cr	N.D.	Cr <sup>6+</sup>	\	1000
	Br	N.D.	PBBs	\	1000
			PBDEs	\	1000
W04053015304C-115	Pb	N.D.	Pb	\	1000
	Cd	N.D.	Cd	\	100
	Hg	N.D.	Hg	\	1000
	Cr	N.D.	Cr <sup>6+</sup>	\	1000
	Br	—	PBBs	\	1000
			PBDEs	\	1000

**NOTE: Report in electronic version is only for client's preview and referee. For confirmative content, formal test report shall prevail.**



Pony Testing International Group

**Test Report**

NO.: W04053015304C

Date: Apr 13, 2012

Page 32 of 52

Test Result (Unit: mg/kg)

Sample No.	EDXRF		Chemical Testing		
	Test Item	Results <sup>(1)</sup>	Test Item	Result <sup>(2)</sup> (mg/kg)	Limit
*W04053015304C-116	Pb	N.D.	Pb	\	1000
	Cd	N.D.	Cd	\	100
	Hg	N.D.	Hg	\	1000
	Cr	N.D.	Cr <sup>6+</sup>	\	1000
	Br	N.D.	PBBs	\	1000
			PBDEs	\	1000
*W04053015304C-117	Pb	49.8	Pb	\	1000
	Cd	16.3	Cd	\	100
	Hg	N.D.	Hg	\	1000
	Cr	N.D.	Cr <sup>6+</sup>	\	1000
	Br	—	PBBs	\	1000
			PBDEs	\	1000
*W04053015304C-118	Pb	24.5	Pb	\	1000
	Cd	N.D.	Cd	\	100
	Hg	N.D.	Hg	\	1000
	Cr	N.D.	Cr <sup>6+</sup>	\	1000
	Br	5.48×10 <sup>4</sup>	PBBs	N.D.	1000
			PBDEs	N.D.	1000
W04053015304C-119	Pb	N.D.	Pb	\	1000
	Cd	N.D.	Cd	\	100
	Hg	N.D.	Hg	\	1000
	Cr	N.D.	Cr <sup>6+</sup>	\	1000
	Br	5.53×10 <sup>4</sup>	PBBs	N.D.	1000
			PBDEs	N.D.	1000
W04053015304C-120	Pb	121	Pb	\	1000
	Cd	N.D.	Cd	\	100
	Hg	N.D.	Hg	\	1000
	Cr	N.D.	Cr <sup>6+</sup>	\	1000
	Br	—	PBBs	\	1000
			PBDEs	\	1000

**NOTE: Report in electronic version is only for client's preview and referee. For confirmative content, formal test report shall prevail.**





Pony Testing International Group

**Test Report**

NO.: W04053015304C

Date: Apr 13, 2012

Page 33 of 52

Test Result (Unit: mg/kg)

Sample No.	EDXRF		Chemical Testing		
	Test Item	Results <sup>(1)</sup>	Test Item	Result <sup>(2)</sup> (mg/kg)	Limit
W04053015304C-121	Pb	N.D.	Pb	\	1000
	Cd	N.D.	Cd	\	100
	Hg	N.D.	Hg	\	1000
	Cr	N.D.	Cr <sup>6+</sup>	\	1000
	Br	67.8	PBBs	\	1000
			PBDEs	\	1000
*W04053015304C-122	Pb	51.5	Pb	\	1000
	Cd	N.D.	Cd	\	100
	Hg	N.D.	Hg	\	1000
	Cr	N.D.	Cr <sup>6+</sup>	\	1000
	Br	N.D.	PBBs	\	1000
			PBDEs	\	1000
*W04053015304C-123	Pb	497	Pb	\	1000
	Cd	N.D.	Cd	\	100
	Hg	N.D.	Hg	\	1000
	Cr	N.D.	Cr <sup>6+</sup>	\	1000
	Br	—	PBBs	\	1000
			PBDEs	\	1000
*W04053015304C-124	Pb	N.D.	Pb	\	1000
	Cd	N.D.	Cd	\	100
	Hg	N.D.	Hg	\	1000
	Cr	18.6	Cr <sup>6+</sup>	\	1000
	Br	N.D.	PBBs	\	1000
			PBDEs	\	1000
*W04053015304C-125	Pb	575	Pb	\	1000
	Cd	N.D.	Cd	\	100
	Hg	N.D.	Hg	\	1000
	Cr	N.D.	Cr <sup>6+</sup>	\	1000
	Br	—	PBBs	\	1000
			PBDEs	\	1000

**NOTE: Report in electronic version is only for client's preview and referee. For confirmative content, formal test report shall prevail.**



Pony Testing International Group

**Test Report**

NO.: W04053015304C

Date: Apr 13, 2012

Page 34 of 52

Test Result (Unit: mg/kg)

Sample No.	EDXRF		Chemical Testing		
	Test Item	Results <sup>(1)</sup>	Test Item	Result <sup>(2)</sup> (mg/kg)	Limit
*W04053015304C-126	Pb	81.3	Pb	\	1000
	Cd	N.D.	Cd	\	100
	Hg	N.D.	Hg	\	1000
	Cr	13.4	Cr <sup>6+</sup>	\	1000
	Br	8.06×10 <sup>3</sup>	PBBs	N.D.	1000
			PBDEs	N.D.	1000
*W04053015304C-127	Pb	109	Pb	\	1000
	Cd	N.D.	Cd	\	100
	Hg	N.D.	Hg	\	1000
	Cr	N.D.	Cr <sup>6+</sup>	\	1000
	Br	—	PBBs	\	1000
			PBDEs	\	1000
W04053015304C-128	Pb	22.0	Pb	\	1000
	Cd	N.D.	Cd	\	100
	Hg	N.D.	Hg	\	1000
	Cr	N.D.	Cr <sup>6+</sup>	\	1000
	Br	4.45×10 <sup>3</sup>	PBBs	N.D.	1000
			PBDEs	N.D.	1000
W04053015304C-130	Pb	N.D.	Pb	\	1000
	Cd	N.D.	Cd	\	100
	Hg	N.D.	Hg	\	1000
	Cr	N.D.	Cr <sup>6+</sup>	\	1000
	Br	5.47×10 <sup>3</sup>	PBBs	N.D.	1000
			PBDEs	N.D.	1000

**NOTE: Report in electronic version is only for client's preview and referee. For confirmative content, formal test report shall prevail.**



Pony Testing International Group

**Test Report**

NO.: W04053015304C

Date: Apr 13, 2012

Page 35 of 52

Test Result (Unit: mg/kg)

Sample No.	EDXRF		Chemical Testing		
	Test Item	Results <sup>(1)</sup>	Test Item	Result <sup>(2)</sup> (mg/kg)	Limit
W04053015304C-131	Pb	199	Pb	\	1000
	Cd	N.D.	Cd	\	100
	Hg	N.D.	Hg	\	1000
	Cr	N.D.	Cr <sup>6+</sup>	\	1000
	Br	—	PBBs	\	1000
			PBDEs	\	1000
*W04053015304C-132	Pb	N.D.	Pb	\	1000
	Cd	N.D.	Cd	\	100
	Hg	N.D.	Hg	\	1000
	Cr	165	Cr <sup>6+</sup>	\	1000
	Br	—	PBBs	\	1000
			PBDEs	\	1000
*W04053015304C-133	Pb	N.D.	Pb	\	1000
	Cd	N.D.	Cd	\	100
	Hg	N.D.	Hg	\	1000
	Cr	20.8	Cr <sup>6+</sup>	\	1000
	Br	7.73×10 <sup>3</sup>	PBBs	N.D.	1000
			PBDEs	N.D.	1000
*W04053015304C-134	Pb	4.03×10 <sup>4</sup>	Pb	20.1	1000
	Cd	N.D.	Cd	\	100
	Hg	N.D.	Hg	\	1000
	Cr	N.D.	Cr <sup>6+</sup>	\	1000
	Br	N.D.	PBBs	\	1000
			PBDEs	\	1000
*W04053015304C-135	Pb	16.1	Pb	\	1000
	Cd	N.D.	Cd	\	100
	Hg	N.D.	Hg	\	1000
	Cr	14.3	Cr <sup>6+</sup>	\	1000
	Br	4.15×10 <sup>3</sup>	PBBs	N.D.	1000
			PBDEs	N.D.	1000

**NOTE: Report in electronic version is only for client's preview and referee. For confirmative content, formal test report shall prevail.**





Pony Testing International Group

**Test Report**

NO.: W04053015304C

Date: Apr 13, 2012

Page 36 of 52

Test Result (Unit: mg/kg)

Sample No.	EDXRF		Chemical Testing		
	Test Item	Results <sup>(1)</sup>	Test Item	Result <sup>(2)</sup> (mg/kg)	Limit
*W04053015304C-136	Pb	43.1	Pb	\	1000
	Cd	N.D.	Cd	\	100
	Hg	N.D.	Hg	\	1000
	Cr	N.D.	Cr <sup>6+</sup>	\	1000
	Br	430	PBBs	\	1000
			PBDEs	\	1000
*W04053015304C-137	Pb	15.4	Pb	\	1000
	Cd	N.D.	Cd	\	100
	Hg	N.D.	Hg	\	1000
	Cr	N.D.	Cr <sup>6+</sup>	\	1000
	Br	4.52x10 <sup>3</sup>	PBBs	N.D.	1000
			PBDEs	N.D.	1000
*W04053015304C-138	Pb	N.D.	Pb	\	1000
	Cd	N.D.	Cd	\	100
	Hg	N.D.	Hg	\	1000
	Cr	N.D.	Cr <sup>6+</sup>	\	1000
	Br	3.06x10 <sup>3</sup>	PBBs	N.D.	1000
			PBDEs	N.D.	1000
*W04053015304C-139	Pb	45.2	Pb	\	1000
	Cd	N.D.	Cd	\	100
	Hg	N.D.	Hg	\	1000
	Cr	58.8	Cr <sup>6+</sup>	\	1000
	Br	112	PBBs	\	1000
			PBDEs	\	1000
*W04053015304C-140	Pb	N.D.	Pb	\	1000
	Cd	N.D.	Cd	\	100
	Hg	N.D.	Hg	\	1000
	Cr	N.D.	Cr <sup>6+</sup>	\	1000
	Br	N.D.	PBBs	\	1000
			PBDEs	\	1000

**NOTE: Report in electronic version is only for client's preview and referee. For confirmative content, formal test report shall prevail.**



Pony Testing International Group

**Test Report**

NO.: W04053015304C

Date: Apr 13, 2012

Page 37 of 52

Test Result (Unit: mg/kg)

Sample No.	EDXRF		Chemical Testing		
	Test Item	Results <sup>(1)</sup>	Test Item	Result <sup>(2)</sup> (mg/kg)	Limit
*W04053015304C-141	Pb	N.D.	Pb	\	1000
	Cd	N.D.	Cd	\	100
	Hg	N.D.	Hg	\	1000
	Cr	N.D.	Cr <sup>6+</sup>	\	1000
	Br	—	PBBs	\	1000
			PBDEs	\	1000
*W04053015304C-142	Pb	330	Pb	\	1000
	Cd	N.D.	Cd	\	100
	Hg	N.D.	Hg	\	1000
	Cr	N.D.	Cr <sup>6+</sup>	\	1000
	Br	—	PBBs	\	1000
			PBDEs	\	1000
*,#2W04053015304C-143	Pb	9.44x10 <sup>3</sup>	Pb	1.46x10 <sup>3</sup>	1000
	Cd	16.4	Cd	\	100
	Hg	N.D.	Hg	\	1000
	Cr	2.94x10 <sup>3</sup>	Cr <sup>6+</sup>	N.D.	1000
	Br	84.5	PBBs	\	1000
			PBDEs	\	1000
*W04053015304C-144	Pb	132	Pb	\	1000
	Cd	N.D.	Cd	\	100
	Hg	N.D.	Hg	\	1000
	Cr	181	Cr <sup>6+</sup>	\	1000
	Br	4.57x10 <sup>4</sup>	PBBs	N.D.	1000
			PBDEs	N.D.	1000
*W04053015304C-145	Pb	N.D.	Pb	\	1000
	Cd	N.D.	Cd	\	100
	Hg	N.D.	Hg	\	1000
	Cr	N.D.	Cr <sup>6+</sup>	\	1000
	Br	—	PBBs	\	1000
			PBDEs	\	1000

**NOTE: Report in electronic version is only for client's preview and referee. For confirmative content, formal test report shall prevail.**



Pony Testing International Group

**Test Report**

NO.: W04053015304C

Date: Apr 13, 2012

Page 38 of 52

Test Result (Unit: mg/kg)

Sample No.	EDXRF		Chemical Testing		
	Test Item	Results <sup>(1)</sup>	Test Item	Result <sup>(2)</sup> (mg/kg)	Limit
*W04053015304C-146	Pb	N.D.	Pb	\	1000
	Cd	N.D.	Cd	\	100
	Hg	N.D.	Hg	\	1000
	Cr	N.D.	Cr <sup>6+</sup>	\	1000
	Br	—	PBBs	\	1000
			PBDEs	\	1000
*W04053015304C-147	Pb	203	Pb	\	1000
	Cd	N.D.	Cd	\	100
	Hg	N.D.	Hg	\	1000
	Cr	14.9	Cr <sup>6+</sup>	\	1000
	Br	—	PBBs	\	1000
			PBDEs	\	1000
*W04053015304C-148	Pb	564	Pb	\	1000
	Cd	N.D.	Cd	\	100
	Hg	N.D.	Hg	\	1000
	Cr	457	Cr <sup>6+</sup>	\	1000
	Br	—	PBBs	\	1000
			PBDEs	\	1000
*W04053015304C-149	Pb	N.D.	Pb	\	1000
	Cd	N.D.	Cd	\	100
	Hg	N.D.	Hg	\	1000
	Cr	N.D.	Cr <sup>6+</sup>	\	1000
	Br	N.D.	PBBs	\	1000
			PBDEs	\	1000
*W04053015304C-150	Pb	N.D.	Pb	\	1000
	Cd	N.D.	Cd	\	100
	Hg	N.D.	Hg	\	1000
	Cr	88.0	Cr <sup>6+</sup>	\	1000
	Br	—	PBBs	\	1000
			PBDEs	\	1000

**NOTE: Report in electronic version is only for client's preview and referee. For confirmative content, formal test report shall prevail.**





Pony Testing International Group

**Test Report**

NO.: W04053015304C

Date: Apr 13, 2012

Page 39 of 52

Test Result (Unit: mg/kg)

Sample No.	EDXRF		Chemical Testing		
	Test Item	Results <sup>(1)</sup>	Test Item	Result <sup>(2)</sup> (mg/kg)	Limit
*W04053015304C-151	Pb	19.0	Pb	\	1000
	Cd	N.D.	Cd	\	100
	Hg	N.D.	Hg	\	1000
	Cr	N.D.	Cr <sup>6+</sup>	\	1000
	Br	N.D.	PBBs	\	1000
			PBDEs	\	1000
*W04053015304C-152	Pb	N.D.	Pb	\	1000
	Cd	N.D.	Cd	\	100
	Hg	N.D.	Hg	\	1000
	Cr	79.4	Cr <sup>6+</sup>	\	1000
	Br	—	PBBs	\	1000
			PBDEs	\	1000
*W04053015304C-153	Pb	N.D.	Pb	\	1000
	Cd	N.D.	Cd	\	100
	Hg	N.D.	Hg	\	1000
	Cr	N.D.	Cr <sup>6+</sup>	\	1000
	Br	N.D.	PBBs	\	1000
			PBDEs	\	1000
*W04053015304C-154	Pb	N.D.	Pb	\	1000
	Cd	N.D.	Cd	\	100
	Hg	N.D.	Hg	\	1000
	Cr	72.6	Cr <sup>6+</sup>	\	1000
	Br	—	PBBs	\	1000
			PBDEs	\	1000
W04053015304C-155	Pb	122	Pb	\	1000
	Cd	N.D.	Cd	\	100
	Hg	N.D.	Hg	\	1000
	Cr	N.D.	Cr <sup>6+</sup>	\	1000
	Br	—	PBBs	\	1000
			PBDEs	\	1000

**NOTE: Report in electronic version is only for client's preview and referee. For confirmative content, formal test report shall prevail.**



Pony Testing International Group

**Test Report**

NO.: W04053015304C

Date: Apr 13, 2012

Page 40 of 52

Test Result (Unit: mg/kg)

Sample No.	EDXRF		Chemical Testing		
	Test Item	Results <sup>(1)</sup>	Test Item	Result <sup>(2)</sup> (mg/kg)	Limit
W04053015304C-156	Pb	N.D.	Pb	\	1000
	Cd	N.D.	Cd	\	100
	Hg	N.D.	Hg	\	1000
	Cr	16.7	Cr <sup>6+</sup>	\	1000
	Br	N.D.	PBBs	\	1000
			PBDEs	\	1000
W04053015304C-157	Pb	133	Pb	\	1000
	Cd	N.D.	Cd	\	100
	Hg	N.D.	Hg	\	1000
	Cr	N.D.	Cr <sup>6+</sup>	\	1000
	Br	—	PBBs	\	1000
			PBDEs	\	1000
*W04053015304C-159	Pb	N.D.	Pb	\	1000
	Cd	N.D.	Cd	\	100
	Hg	N.D.	Hg	\	1000
	Cr	385	Cr <sup>6+</sup>	\	1000
	Br	184	PBBs	\	1000
			PBDEs	\	1000
*W04053015304C-160	Pb	N.D.	Pb	\	1000
	Cd	N.D.	Cd	\	100
	Hg	N.D.	Hg	\	1000
	Cr	39.3	Cr <sup>6+</sup>	\	1000
	Br	N.D.	PBBs	\	1000
			PBDEs	\	1000

**NOTE: Report in electronic version is only for client's preview and referee. For confirmative content, formal test report shall prevail.**



Pony Testing International Group

**Test Report**

NO.: W04053015304C

Date: Apr 13, 2012

Page 41 of 52

Test Result (Unit: mg/kg)

Sample No.	EDXRF		Chemical Testing		
	Test Item	Results <sup>(1)</sup>	Test Item	Result <sup>(2)</sup> (mg/kg)	Limit
*W04053015304C-161	Pb	N.D.	Pb	\	1000
	Cd	N.D.	Cd	\	100
	Hg	N.D.	Hg	\	1000
	Cr	N.D.	Cr <sup>6+</sup>	\	1000
	Br	—	PBBs	\	1000
			PBDEs	\	1000
*W04053015304C-162	Pb	N.D.	Pb	\	1000
	Cd	N.D.	Cd	\	100
	Hg	N.D.	Hg	\	1000
	Cr	N.D.	Cr <sup>6+</sup>	\	1000
	Br	82.7	PBBs	\	1000
			PBDEs	\	1000
*W04053015304C-163	Pb	N.D.	Pb	\	1000
	Cd	N.D.	Cd	\	100
	Hg	N.D.	Hg	\	1000
	Cr	1.31×10 <sup>3</sup>	Cr <sup>6+</sup>	N.D.	1000
	Br	—	PBBs	\	1000
			PBDEs	\	1000
*W04053015304C-164	Pb	36.9	Pb	\	1000
	Cd	N.D.	Cd	\	100
	Hg	N.D.	Hg	\	1000
	Cr	618	Cr <sup>6+</sup>	\	1000
	Br	—	PBBs	\	1000
			PBDEs	\	1000
*W04053015304C-165	Pb	149	Pb	\	1000
	Cd	N.D.	Cd	\	100
	Hg	N.D.	Hg	\	1000
	Cr	335	Cr <sup>6+</sup>	\	1000
	Br	—	PBBs	\	1000
			PBDEs	\	1000

**NOTE: Report in electronic version is only for client's preview and referee. For confirmative content, formal test report shall prevail.**





Pony Testing International Group

**Test Report**

NO.: W04053015304C

Date: Apr 13, 2012

Page 42 of 52

Test Result (Unit: mg/kg)

Sample No.	EDXRF		Chemical Testing		
	Test Item	Results <sup>(1)</sup>	Test Item	Result <sup>(2)</sup> (mg/kg)	Limit
*W04053015304C-166	Pb	13.9	Pb	\	1000
	Cd	N.D.	Cd	\	100
	Hg	N.D.	Hg	\	1000
	Cr	N.D.	Cr <sup>6+</sup>	\	1000
	Br	77.0	PBBs	\	1000
			PBDEs	\	1000
*W04053015304C-168	Pb	132	Pb	\	1000
	Cd	N.D.	Cd	\	100
	Hg	N.D.	Hg	\	1000
	Cr	N.D.	Cr <sup>6+</sup>	\	1000
	Br	—	PBBs	\	1000
			PBDEs	\	1000
*W04053015304C-169	Pb	50.9	Pb	\	1000
	Cd	N.D.	Cd	\	100
	Hg	N.D.	Hg	\	1000
	Cr	N.D.	Cr <sup>6+</sup>	\	1000
	Br	4.11×10 <sup>3</sup>	PBBs	N.D.	1000
			PBDEs	N.D.	1000
W04053015304C-170	Pb	N.D.	Pb	\	1000
	Cd	N.D.	Cd	\	100
	Hg	N.D.	Hg	\	1000
	Cr	N.D.	Cr <sup>6+</sup>	\	1000
	Br	N.D.	PBBs	\	1000
			PBDEs	\	1000

**NOTE: Report in electronic version is only for client's preview and referee. For confirmative content, formal test report shall prevail.**



Pony Testing International Group

**Test Report**

NO.: W04053015304C

Date: Apr 13, 2012

Page 43 of 52

Test Result (Unit: mg/kg)

Sample No.	EDXRF		Chemical Testing		
	Test Item	Results <sup>(1)</sup>	Test Item	Result <sup>(2)</sup> (mg/kg)	Limit
W04053015304C-171	Pb	N.D.	Pb	\	1000
	Cd	N.D.	Cd	\	100
	Hg	N.D.	Hg	\	1000
	Cr	N.D.	Cr <sup>6+</sup>	\	1000
	Br	N.D.	PBBs	\	1000
			PBDEs	\	1000
W04053015304C-172	Pb	N.D.	Pb	\	1000
	Cd	N.D.	Cd	\	100
	Hg	N.D.	Hg	\	1000
	Cr	N.D.	Cr <sup>6+</sup>	\	1000
	Br	5.09×10 <sup>3</sup>	PBBs	N.D.	1000
			PBDEs	N.D.	1000
W04053015304C-173	Pb	145	Pb	\	1000
	Cd	N.D.	Cd	\	100
	Hg	N.D.	Hg	\	1000
	Cr	N.D.	Cr <sup>6+</sup>	\	1000
	Br	—	PBBs	\	1000
			PBDEs	\	1000
W04053015304C-174	Pb	65.4	Pb	\	1000
	Cd	N.D.	Cd	\	100
	Hg	N.D.	Hg	\	1000
	Cr	54.3	Cr <sup>6+</sup>	\	1000
	Br	4.60×10 <sup>4</sup>	PBBs	N.D.	1000
			PBDEs	N.D.	1000
W04053015304C-175	Pb	178	Pb	\	1000
	Cd	N.D.	Cd	\	100
	Hg	N.D.	Hg	\	1000
	Cr	N.D.	Cr <sup>6+</sup>	\	1000
	Br	—	PBBs	\	1000
			PBDEs	\	1000

**NOTE: Report in electronic version is only for client's preview and referee. For confirmative content, formal test report shall prevail.**



Pony Testing International Group

**Test Report**

NO.: W04053015304C

Date: Apr 13, 2012

Page 44 of 52

Test Result (Unit: mg/kg)

Sample No.	EDXRF		Chemical Testing		
	Test Item	Results <sup>(1)</sup>	Test Item	Result <sup>(2)</sup> (mg/kg)	Limit
W04053015304C-176	Pb	N.D.	Pb	\	1000
	Cd	N.D.	Cd	\	100
	Hg	N.D.	Hg	\	1000
	Cr	60.9	Cr <sup>6+</sup>	\	1000
	Br	—	PBBs	\	1000
			PBDEs	\	1000
W04053015304C-177	Pb	383	Pb	\	1000
	Cd	N.D.	Cd	\	100
	Hg	N.D.	Hg	\	1000
	Cr	N.D.	Cr <sup>6+</sup>	\	1000
	Br	—	PBBs	\	1000
			PBDEs	\	1000
W04053015304C-178	Pb	730	Pb	\	1000
	Cd	N.D.	Cd	\	100
	Hg	N.D.	Hg	\	1000
	Cr	44.0	Cr <sup>6+</sup>	\	1000
	Br	—	PBBs	\	1000
			PBDEs	\	1000
W04053015304C-179	Pb	117	Pb	\	1000
	Cd	N.D.	Cd	\	100
	Hg	N.D.	Hg	\	1000
	Cr	N.D.	Cr <sup>6+</sup>	\	1000
	Br	—	PBBs	\	1000
			PBDEs	\	1000
W04053015304C-180	Pb	438	Pb	\	1000
	Cd	N.D.	Cd	\	100
	Hg	N.D.	Hg	\	1000
	Cr	N.D.	Cr <sup>6+</sup>	\	1000
	Br	—	PBBs	\	1000
			PBDEs	\	1000

**NOTE: Report in electronic version is only for client's preview and referee. For confirmative content, formal test report shall prevail.**



Pony Testing International Group

**Test Report**

NO.: W04053015304C

Date: Apr 13, 2012

Page 45 of 52

Test Result (Unit: mg/kg)

Sample No.	EDXRF		Chemical Testing		
	Test Item	Results <sup>(1)</sup>	Test Item	Result <sup>(2)</sup> (mg/kg)	Limit
W04053015304C-181	Pb	372	Pb	\	1000
	Cd	N.D.	Cd	\	100
	Hg	N.D.	Hg	\	1000
	Cr	87.4	Cr <sup>6+</sup>	\	1000
	Br	—	PBBs	\	1000
			PBDEs	\	1000
W04053015304C-182	Pb	486	Pb	\	1000
	Cd	N.D.	Cd	\	100
	Hg	N.D.	Hg	\	1000
	Cr	212	Cr <sup>6+</sup>	\	1000
	Br	—	PBBs	\	1000
			PBDEs	\	1000
W04053015304C-183	Pb	125	Pb	\	1000
	Cd	N.D.	Cd	\	100
	Hg	N.D.	Hg	\	1000
	Cr	291	Cr <sup>6+</sup>	\	1000
	Br	—	PBBs	\	1000
			PBDEs	\	1000
W04053015304C-184	Pb	N.D.	Pb	\	1000
	Cd	N.D.	Cd	\	100
	Hg	N.D.	Hg	\	1000
	Cr	132	Cr <sup>6+</sup>	\	1000
	Br	—	PBBs	\	1000
			PBDEs	\	1000
W04053015304C-185	Pb	215	Pb	\	1000
	Cd	N.D.	Cd	\	100
	Hg	N.D.	Hg	\	1000
	Cr	N.D.	Cr <sup>6+</sup>	\	1000
	Br	—	PBBs	\	1000
			PBDEs	\	1000

**NOTE: Report in electronic version is only for client's preview and referee. For confirmative content, formal test report shall prevail.**





Pony Testing International Group

**Test Report**

NO.: W04053015304C

Date: Apr 13, 2012

Page 46 of 52

Test Result (Unit: mg/kg)

Sample No.	EDXRF		Chemical Testing		
	Test Item	Results <sup>(1)</sup>	Test Item	Result <sup>(2)</sup> (mg/kg)	Limit
W04053015304C-186	Pb	88.0	Pb	\	1000
	Cd	N.D.	Cd	\	100
	Hg	N.D.	Hg	\	1000
	Cr	152	Cr <sup>6+</sup>	\	1000
	Br	—	PBBs	\	1000
			PBDEs	\	1000
W04053015304C-187	Pb	213	Pb	\	1000
	Cd	N.D.	Cd	\	100
	Hg	N.D.	Hg	\	1000
	Cr	12.7	Cr <sup>6+</sup>	\	1000
	Br	—	PBBs	\	1000
			PBDEs	\	1000
W04053015304C-188	Pb	N.D.	Pb	\	1000
	Cd	N.D.	Cd	\	100
	Hg	N.D.	Hg	\	1000
	Cr	39.9	Cr <sup>6+</sup>	\	1000
	Br	—	PBBs	\	1000
			PBDEs	\	1000
W04053015304C-189	Pb	184	Pb	\	1000
	Cd	N.D.	Cd	\	100
	Hg	N.D.	Hg	\	1000
	Cr	132	Cr <sup>6+</sup>	\	1000
	Br	—	PBBs	\	1000
			PBDEs	\	1000
W04053015304C-190	Pb	N.D.	Pb	\	1000
	Cd	N.D.	Cd	\	100
	Hg	N.D.	Hg	\	1000
	Cr	N.D.	Cr <sup>6+</sup>	\	1000
	Br	—	PBBs	\	1000
			PBDEs	\	1000

**NOTE: Report in electronic version is only for client's preview and referee. For confirmative content, formal test report shall prevail.**



Pony Testing International Group

**Test Report**

NO.: W04053015304C

Date: Apr 13, 2012

Page 47 of 52

Test Result (Unit: mg/kg)

Sample No.	EDXRF		Chemical Testing		
	Test Item	Results <sup>(1)</sup>	Test Item	Result <sup>(2)</sup> (mg/kg)	Limit
W04053015304C-191	Pb	N.D.	Pb	\	1000
	Cd	N.D.	Cd	\	100
	Hg	N.D.	Hg	\	1000
	Cr	N.D.	Cr <sup>6+</sup>	\	1000
	Br	N.D.	PBBs	\	1000
			PBDEs	\	1000
W04053015304C-192	Pb	N.D.	Pb	\	1000
	Cd	N.D.	Cd	\	100
	Hg	N.D.	Hg	\	1000
	Cr	N.D.	Cr <sup>6+</sup>	\	1000
	Br	N.D.	PBBs	\	1000
			PBDEs	\	1000
*W04053015304C-193	Pb	N.D.	Pb	\	1000
	Cd	N.D.	Cd	\	100
	Hg	N.D.	Hg	\	1000
	Cr	N.D.	Cr <sup>6+</sup>	\	1000
	Br	N.D.	PBBs	\	1000
			PBDEs	\	1000
*W04053015304C-194	Pb	134	Pb	\	1000
	Cd	N.D.	Cd	\	100
	Hg	N.D.	Hg	\	1000
	Cr	538	Cr <sup>6+</sup>	\	1000
	Br	—	PBBs	\	1000
			PBDEs	\	1000
*W04053015304C-195	Pb	116	Pb	\	1000
	Cd	N.D.	Cd	\	100
	Hg	N.D.	Hg	\	1000
	Cr	39.9	Cr <sup>6+</sup>	\	1000
	Br	—	PBBs	\	1000
			PBDEs	\	1000

**NOTE: Report in electronic version is only for client's preview and referee. For confirmative content, formal test report shall prevail.**



Pony Testing International Group

**Test Report**

NO.: W04053015304C

Date: Apr 13, 2012

Page 48 of 52

Test Result (Unit: mg/kg)

Sample No.	EDXRF		Chemical Testing		
	Test Item	Results <sup>(1)</sup>	Test Item	Result <sup>(2)</sup> (mg/kg)	Limit
*W04053015304C-196	Pb	124	Pb	\	1000
	Cd	N.D.	Cd	\	100
	Hg	N.D.	Hg	\	1000
	Cr	29.2	Cr <sup>6+</sup>	\	1000
	Br	N.D.	PBBs	\	1000
			PBDEs	\	1000
*W04053015304C-197	Pb	138	Pb	\	1000
	Cd	N.D.	Cd	\	100
	Hg	N.D.	Hg	\	1000
	Cr	14.4	Cr <sup>6+</sup>	\	1000
	Br	N.D.	PBBs	\	1000
			PBDEs	\	1000
*W04053015304C-198	Pb	N.D.	Pb	\	1000
	Cd	N.D.	Cd	\	100
	Hg	N.D.	Hg	\	1000
	Cr	N.D.	Cr <sup>6+</sup>	\	1000
	Br	N.D.	PBBs	\	1000
			PBDEs	\	1000

**NOTE: Report in electronic version is only for client's preview and referee. For confirmative content, formal test report shall prevail.**

# Test Report

NO.: W04053015304C

Date: Apr 13, 2012

Page 49 of 52

**Remark**

- (1) (a) It is the result on total Br while test item on restricted substances is PBBs/PBDEs. It is the result on total Cr while test item on restricted substances is Cr<sup>6+</sup>.
- (b) Results are obtained by EDXRF for primary screening, and further chemical testing, if the concentration exceeds the below warning value according to IEC 62321:2008 (unit: mg/kg)

Element	Polymer	Metal	Composite Materials
Cd	$BL \leq (70-3\sigma) < X < (130+3\sigma) \leq OL$	$BL \leq (70-3\sigma) < X < (130+3\sigma) \leq OL$	$LOD < X < (150+3\sigma) \leq OL$
Pb	$BL \leq (700-3\sigma) < X < (1300+3\sigma) \leq OL$	$BL \leq (700-3\sigma) < X < (1300+3\sigma) \leq OL$	$BL \leq (500-3\sigma) < X < (1500+3\sigma) \leq OL$
Hg	$BL \leq (700-3\sigma) < X < (1300+3\sigma) \leq OL$	$BL \leq (700-3\sigma) < X < (1300+3\sigma) \leq OL$	$BL \leq (500-3\sigma) < X < (1500+3\sigma) \leq OL$
Br	$BL \leq (300-3\sigma) < X$	—	$BL \leq (250-3\sigma) < X$
Cr	$BL \leq (700-3\sigma) < X$	$BL \leq (700-3\sigma) < X$	$BL \leq (500-3\sigma) < X$

(c) OL=Over Limit, BL=Below Limit, IN=Inconclusive, LOD=Limit of Detection

(d) The XRF screening test for RoHs elements-The reading may be different to the actual content in the sample be of non-uniformity composition

- (2) (a) mg/kg=ppm=0.0001%, N.D.= not detected(<MDL), —= not conducted, /= not available.
- (b) Unit and Method Detection Limit (MDL) in wet chemical test

Test Items	Pb	Cd	Hg
Units	mg/kg	mg/kg	mg/kg
MDL	1	1	1

The MDL for single compound of PBBs & PBDEs is 5 mg/kg and MDL of Cr<sup>6+</sup> for polymer & composite sample is 1 mg/kg.

- (3) \*The results of No.W04053015304C-1~4 refer to report W04053015204C-1~4
- \*The results of No.W04053015304C-6~22 refer to report W04053015204C-6~22
- \*The results of No.W04053015304C-29 refer to report W04053015204C-26
- \*The results of No.W04053015304C-31~37 refer to report W04053015204C-27~33
- \*The results of No.W04053015304C-38 refer to report W04053015204C-35
- \*The results of No.W04053015304C-42~47 refer to report W04053015204C-37~41
- \*The results of No.W04053015304C-48~50 refer to report W04053015204C-44~46
- \*The results of No.W04053015304C-54~56 refer to report W04053015204C-49~51
- \*The results of No.W04053015304C-57~60 refer to report W04053015204C-53~56
- \*The results of No.W04053015304C-61 refer to report W04053015204C-59





Pony Testing International Group

## Test Report

NO.: W04053015304C

Date: Apr 13, 2012

Page 50 of 52

- \*The results of No.W04053015304C-62~63 refer to report W04053015204C-61~62
  - \*The results of No.W04053015304C-65~66 refer to report W04053015204C-63~64
  - \*The results of No.W04053015304C-67 refer to report W04053015204C-57
  - \*The results of No.W04053015304C-68 refer to report W04053015204C-60
  - \*The results of No.W04053015304C-69~71 refer to report W04053015204C-65~67
  - \*The results of No.W04053015304C-72 refer to report W04053015204C-132
  - \*The results of No.W04053015304C-74~104 refer to report W04053015204C-68~98
  - \*The results of No.W04053015304C-116~118 refer to report W04053015204C-133~135
  - \*The results of No.W04053015304C-122~123 refer to report W04053015204C-137~138
  - \*The results of No.W04053015304C-124~125 refer to report W04053015204C-141~142
  - \*The results of No.W04053015304C-126~127 refer to report W04053015204C-145~146
  - \*The results of No.W04053015304C-132~143 refer to report W04053015204C-151~162
  - \*The results of No.W04053015304C-144 refer to report W04053015204C-168
  - \*The results of No.W04053015304C-145~154 refer to report W04053015204C-174~183
  - \*The results of No.W04053015304C-159~166 refer to report W04053015204C-185~192
  - \*The results of No.W04053015304C-168~169 refer to report W04053015204C-194~195
  - \*The results of No.W04053015304C-193 refer to report W04053015204C-110
  - \*The results of No.W04053015304C-194~197 refer to report W04053015204C-200~203
  - \*The results of No.W04053015304C-198 refer to report W04053015204C-111
- (4) <sup>#1</sup> According with the exemption list of EU RoHS Directive articles 6(c), Copper alloy containing no more than 4 % lead by weight
- <sup>#2</sup> According with the exemption list of EU RoHS Directive articles 5(a), Lead in glass of cathode ray tubes is exempted

**NOTE: Report in electronic version is only for client's preview and referee. For confirmative content, formal test report shall prevail.**

## Test Report

NO.: W04053015304C

Date: Apr 13, 2012

Page 51 of 52

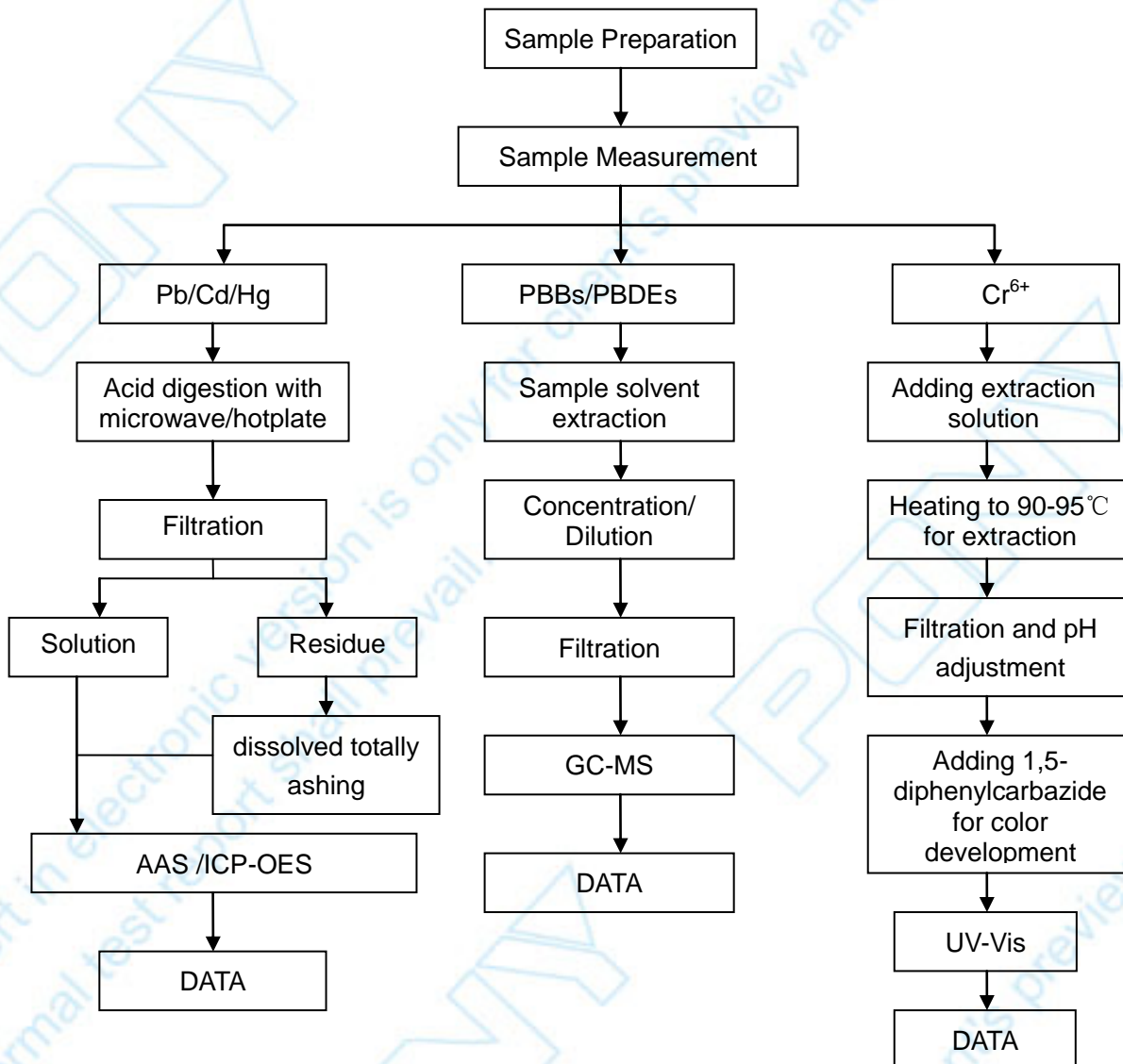
### Measurement Flow-chart Of Chemical Testing

Tested by: Yangqiuping

Checked by: Maozuqing

Person in charge of the lab by: Zhaoyanyuan

These Samples Were Dissolved Totally By Pre-conditioning Method According To Below Flow Chart. ( $\text{Cr}^{6+}$  And PBBs/PBDEs Test Method Excluded)



## Test Report

NO.: W04053015304C

Date: Apr 13, 2012

Page 52 of 52

Photo:



Pony authenticate the photo on original report only

\*\*\*End of Report\*\*\*